



Newly refurbished to an exceptionally high standard, a bright and spacious three bedroom first and second floor flat with roof terrace and two balconies.

The first floor comprises a beautifully appointed, fully integrated kitchen/diner with front balcony and a reception room directly next door. On the split level you will find a sizable, stylish family bathroom with underfloor heating, separate shower, roll-top bath, double basin vanity unit and a laundry room. There are three, well arranged bedrooms on the second floor, one with a balcony facing the rear. The top floor provides access to a peaceful private roof terrace accessed from the landing on the same level.

This beautiful property on Wandsworth Bridge Road is ideally situated close to the many local shops, restaurants and cafés and is within walking distance to Imperial Wharf, Parsons Green, Fulham Broadway and Wandsworth Town stations. It is also only a short bus ride away from Clapham Junction, the Fulham Road and the King's Road. Available immediately.

- Share of Freehold
- All appliances are brand new
- Brand new boiler
- USB plug sockets





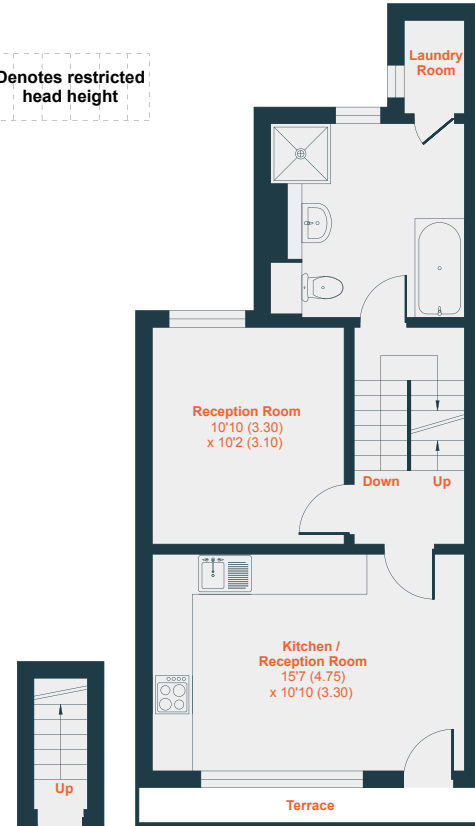






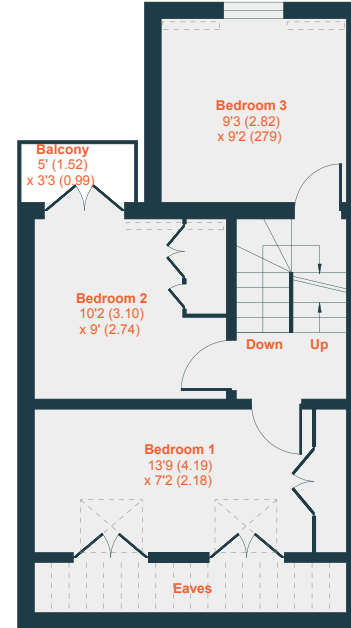


Denotes restricted head height

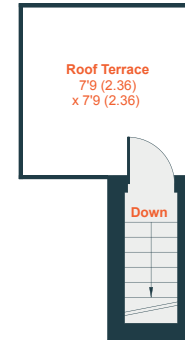


FIRST FLOOR

GROUND FLOOR



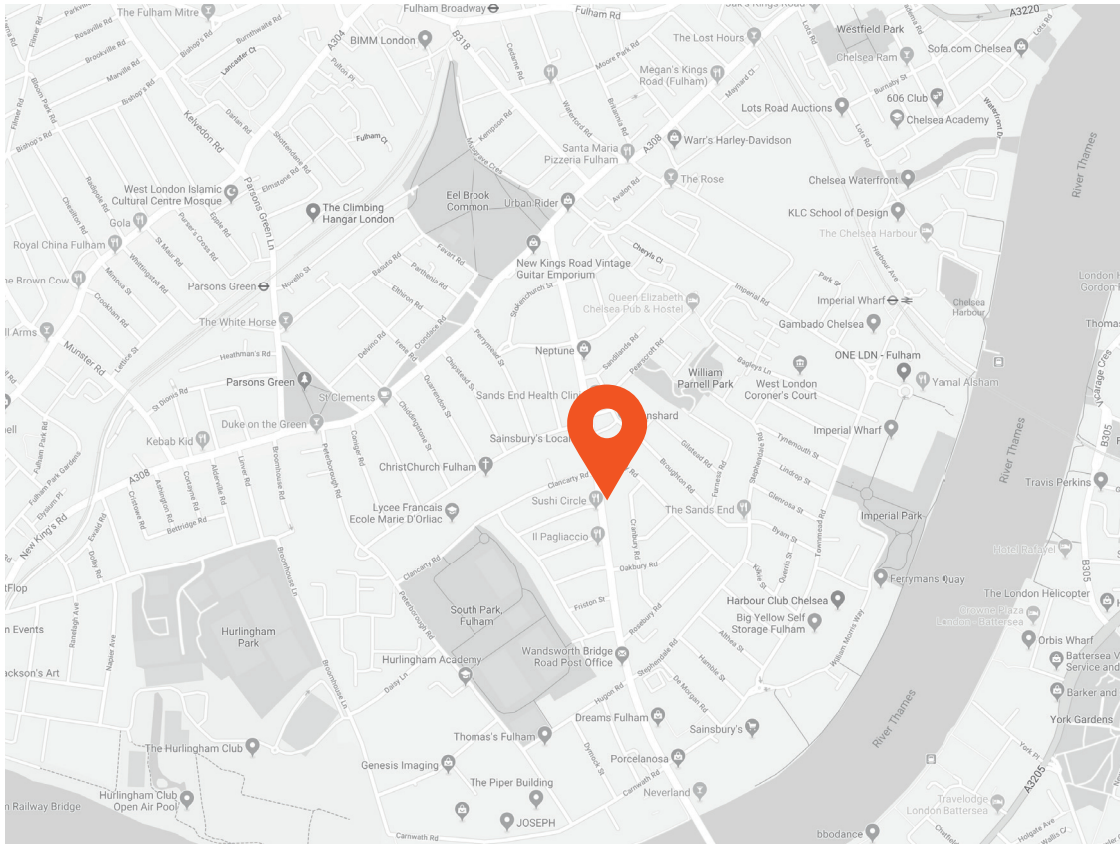
SECOND FLOOR



THIRD FLOOR

Approximate Area = 862 sq ft / 80 sq m
Limited Use Area(s) = 64 sq ft / 6 sq m
Total = 926 sq ft / 86 sq m

For identification only - Not to scale



Score	Energy rating	Current	Potential
92+	A		
81-91	B		
69-80	C		73 C
55-68	D	68 D	
39-54	E		
21-38	F		
1-20	G		



This recyclable brochure has been produced in good faith to give a general guide. We have not undertaken a structural survey, nor have we tested the services or appliances. All measurements are approximate and the lease details where applicable must be confirmed by the solicitor. Brochure prepared by Colourbrush.

aspire.co.uk

Transport Links

- Fulham Broadway (0.7 miles)
- Imperial Wharf (0.7 miles)
- Parsons Green (0.7 miles)

Aspire Fulham South

+44 (0) 20 7736 6110
fulham@aspire.co.uk

Aspire Fulham Central

+44 (0) 20 7381 7381
c.fulham@aspire.co.uk

