



A bright and spacious top floor, two bedroom split-level flat presented in excellent condition with a gorgeous, sizable roof terrace.

The first floor comprises a generous reception/dining room with a Juliette balcony overlooking the rooftops and gardens to the rear of the building and a stylish, well-equipped kitchen directly next door. On the second floor you will find two large double bedrooms, both with built-in wardrobes, a modern family bathroom and a private roof terrace providing a peaceful haven to enjoy. The property further benefits from ample storage throughout.

Conveniently located just a short walk to both Parsons Green and Fulham Broadway tube stations, Imperial Wharf overground station and Chelsea Harbour pier. The property is close to numerous local bars, restaurants and cafés on the Wandsworth Bridge Road and also to those on the Kings Road and Fulham Road. The Green open spaces of Eel Brook Common and South Park are also very nearby.









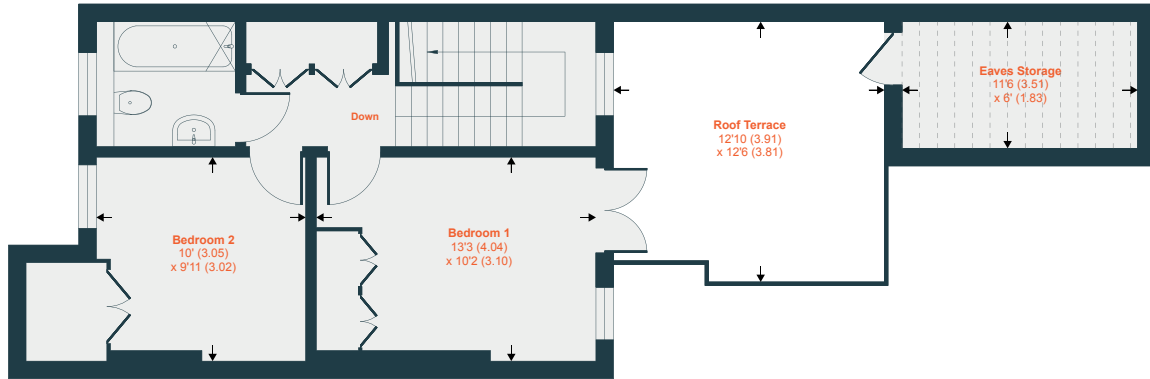




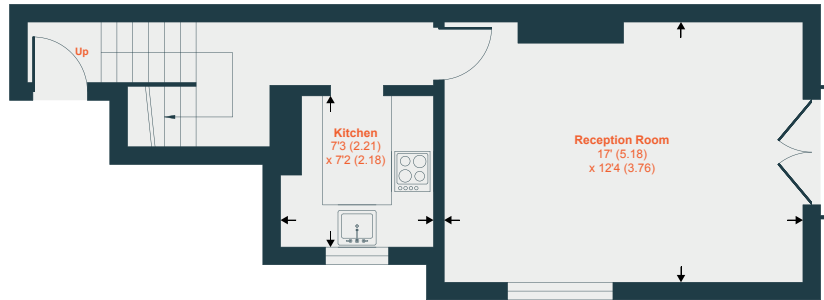
Denotes restricted
head height

Approximate Area = 745 sq ft / 69 sq m
Limited Use Area(s) = 67 sq ft / 6 sq m
Total = 812 sq ft / 75 sq m

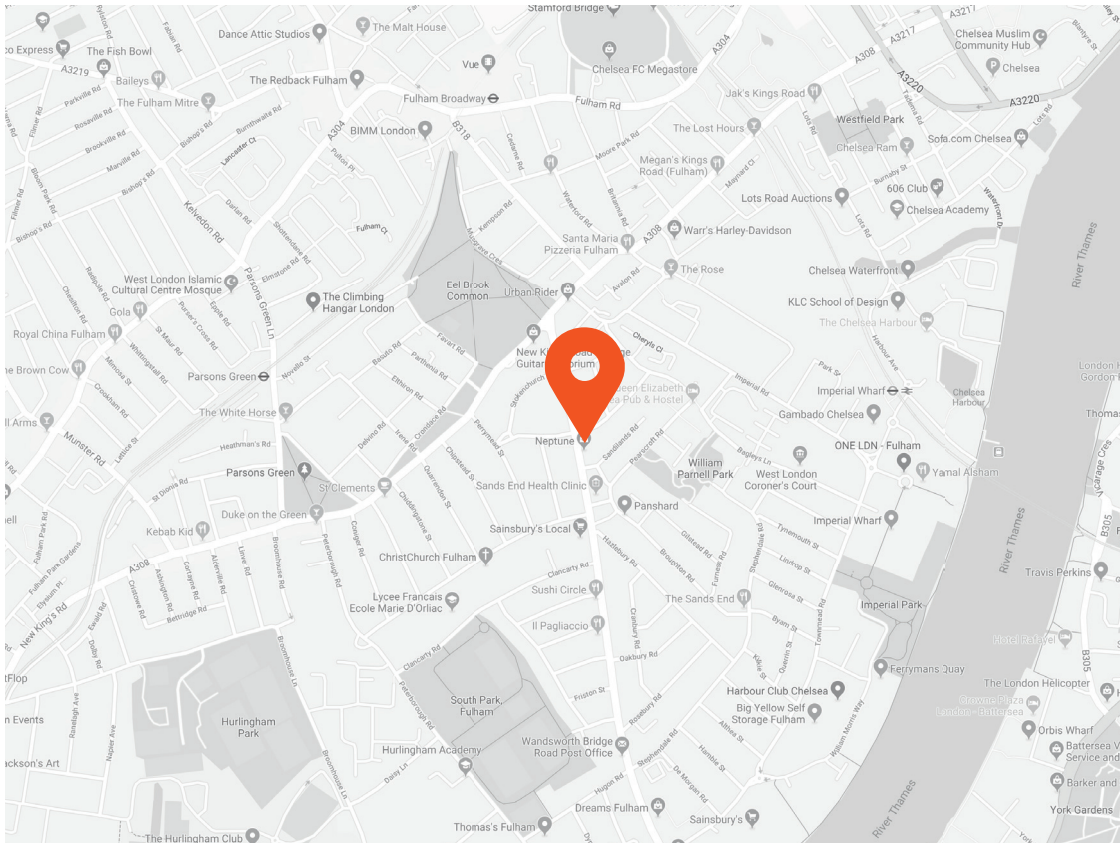
For identification only - Not to scale



SECOND FLOOR



FIRST FLOOR



Score	Energy rating	Current	Potential
92+	A		
81-91	B		
69-80	C		79 C
55-68	D	65 D	
39-54	E		
21-38	F		
1-20	G		



This recyclable brochure has been produced in good faith to give a general guide. We have not undertaken a structural survey, nor have we tested the services or appliances. All measurements are approximate and the lease details where applicable must be confirmed by the solicitor. Brochure prepared by Colourbrush.

aspire.co.uk

Transport Links

- Fulham Broadway (0.5 miles)
- Imperial Wharf (0.6 miles)
- Parsons Green (0.6 miles)

Aspire Fulham South

+44 (0) 20 7736 6110
fulham@aspire.co.uk

Aspire Fulham Central

+44 (0) 20 7381 7381
c.fulham@aspire.co.uk

