



A beautifully presented, lateral two bedroom garden flat located in the desirable 'Munster Village'.

This gorgeous and bright ground floor property comprises two generous double bedrooms - both with built-in wardrobes and shelving, stylish bathroom, a sleek well-equipped kitchen with breakfast bar, spacious reception room with French doors leading to the unusually large pretty garden providing ideal space for entertaining and al fresco dining. Further benefits include built-in storage in the reception room, a communal roof terrace and potential to extend into the garden to increase the living space.

St Olaf's Street is located just off the Munster Road with its array of local shops, cafés and restaurants. Transport links are accessible via the Fulham Palace Road, Dawes Road, Lillie Road and the property is also within walking distance to Parsons Green tube station (District line).



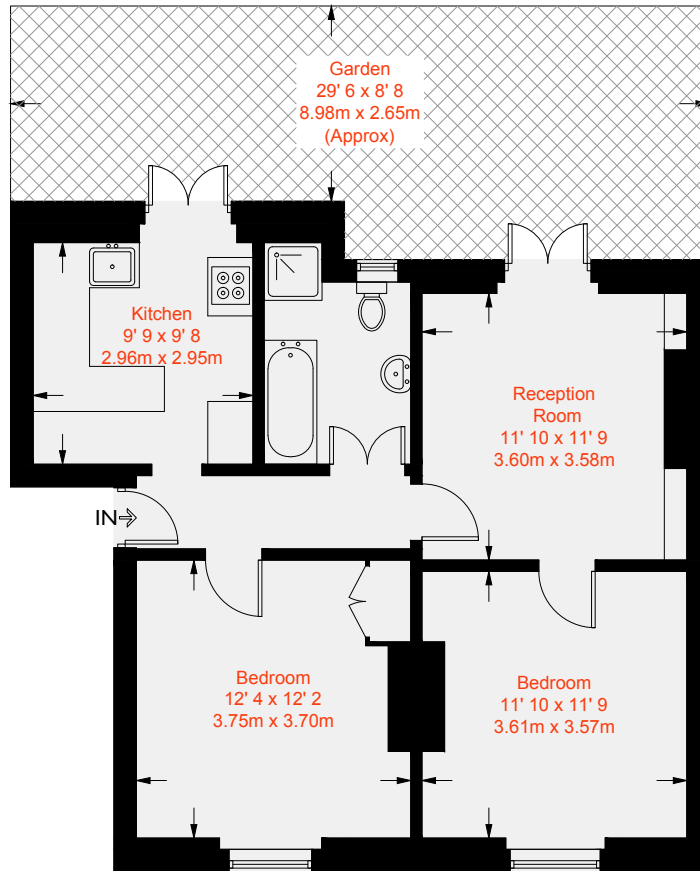




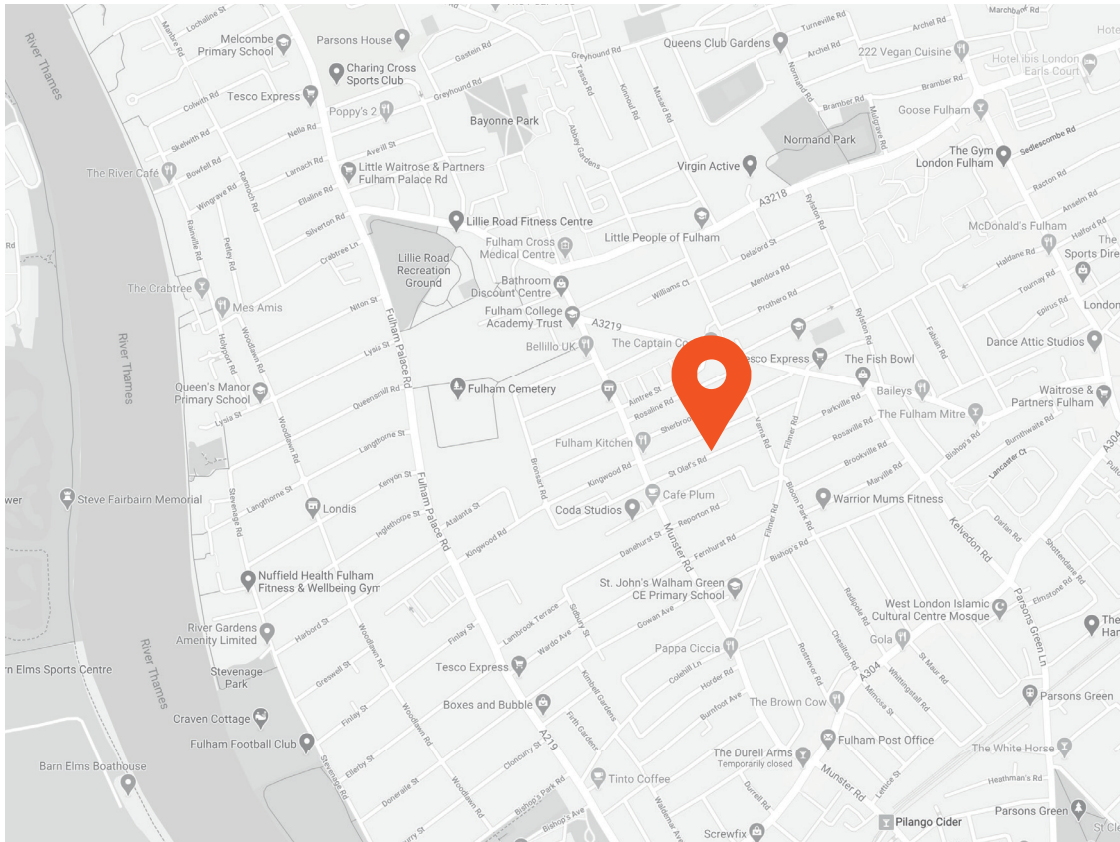




Approximate Gross Internal Area = 667 sq ft / 62 sq m



Ground Floor



Score	Energy rating	Current	Potential
92+	A		
81-91	B		
69-80	C		
55-68	D	62 D	62 D
39-54	E		
21-38	F		
1-20	G		



This recyclable brochure has been produced in good faith to give a general guide. We have not undertaken a structural survey, nor have we tested the services or appliances. All measurements are approximate and the lease details where applicable must be confirmed by the solicitor. Brochure prepared by Colourbrush.

aspire.co.uk

Transport Links

- Parsons Green (0.6 miles)
- Fulham Broadway (0.7 miles)
- Barons Court (1.1 miles)

Aspire Fulham South

+44 (0) 20 7736 6110
fulham@aspire.co.uk

Aspire Fulham Central

+44 (0) 20 7381 7381
c.fulham@aspire.co.uk

