



A superb four-bedroom house situated in the highly sought-after Bury Triangle offering spacious accommodation throughout. What sets the property apart is a wider than usual footprint combined with higher than usual ceilings providing an incredible sense of space throughout. With potential for further expansion subject to planning permission, the house is already over 1,800 sq ft in space.

The property offers master bedroom with en suite shower room, three further double bedrooms, family bathroom, double reception room, kitchen/ breakfast room, downstairs cloakroom, conservatory and pretty rear garden. The property is located within a ten-minute walk of Fulham Broadway and Parsons Green, moments from South Park, and a few yards from all the local amenities on Wandsworth Bridge Road.

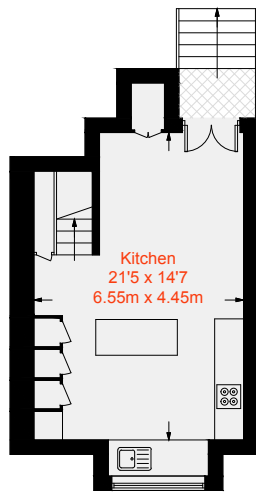




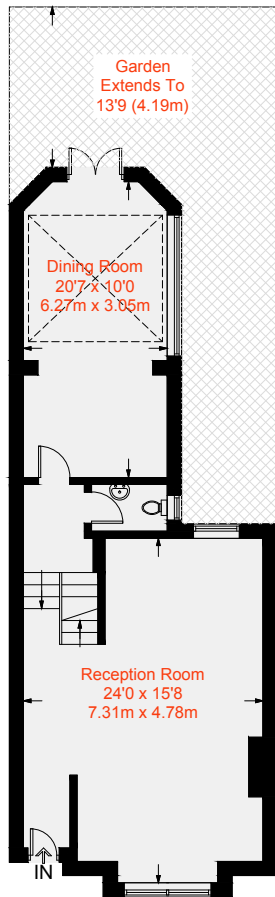




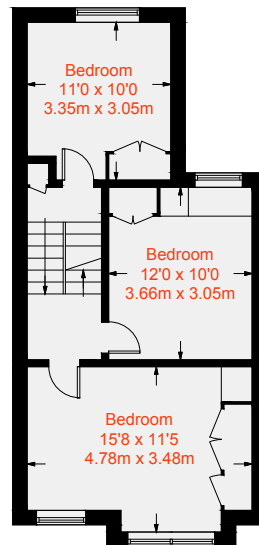




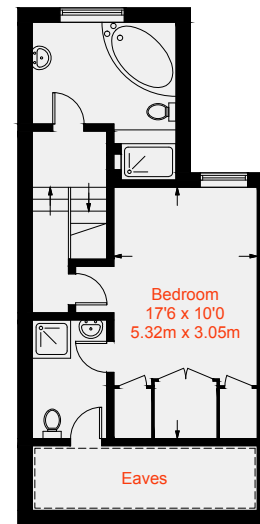
Lower Ground Floor  
334 sq ft / 31 sq m



Ground Floor  
603 sq ft / 56 sq m



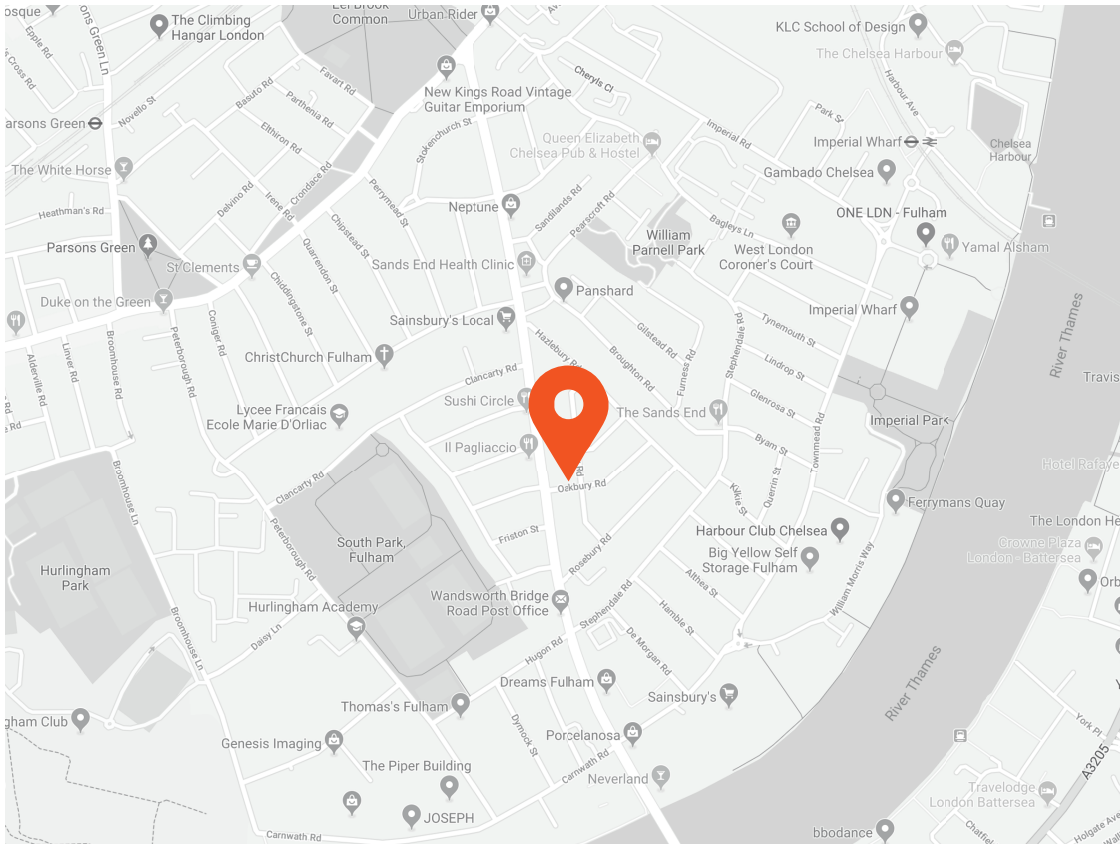
First Floor  
477 sq ft / 44.3 sq m



Second Floor  
470 sq ft / 43.7 sq m

Approximate Gross Internal Area = 1798 sq ft / 167 sq m  
 (Excluding Reduce Headroom / Eaves Storage)  
 Reduced Eaves Storage = 86 sq ft / 8 sq m   = Reduced Head Height  
 Total = 1884 sq ft / 175 sq m



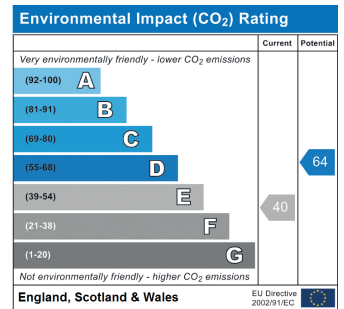
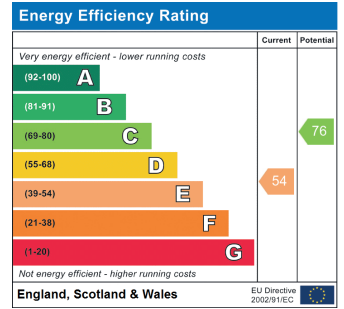


### Transport Links

- Imperial Wharf (0.6 miles)
- Parsons Green (0.8 miles)
- Fulham Broadway (0.8 miles)

**Aspire Fulham South**  
 +44 (0) 20 7736 6110  
 fulham@aspire.co.uk

**Aspire Fulham Central**  
 +44 (0) 20 7381 7381  
 c.fulham@aspire.co.uk



This recyclable brochure has been produced in good faith to give a general guide. We have not undertaken a structural survey, nor have we tested the services or appliances. All measurements are approximate and the lease details where applicable must be confirmed by the solicitor. Brochure prepared by Colourbrush.

[aspire.co.uk](http://aspire.co.uk)

