



This huge top floor duplex apartment has been refurbished to the highest levels. With stunning style throughout this 956 square foot two bedroom is gorgeous.

With two large double bedrooms and two bathrooms it provides ample living space and benefits from a huge open plan reception. The kitchen is in a modern style with all the appliances one could want and a granite worktop and plenty of storage, while the reception is large enough to accommodate a spacious dining area and a reception area with plenty of seating space.

Situated on a quiet residential road, St Dunstons Road is set only a short walk from Barons Court and West Kensington stations and close to many local bus routes both into and out of town.



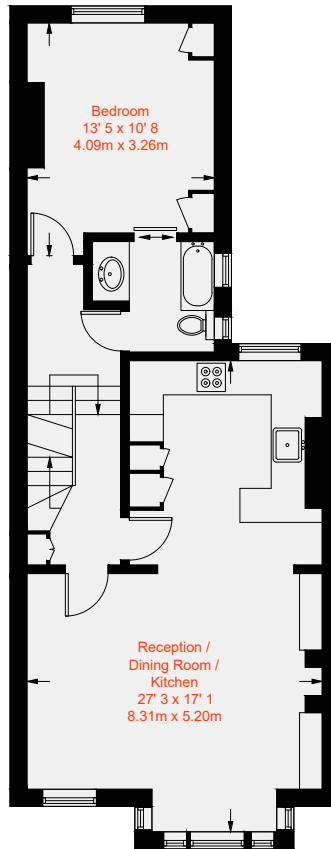




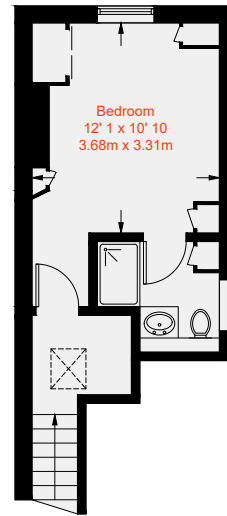




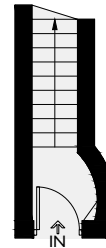
Approximate Gross Internal Area = 956 sq ft / 88.8 sq m



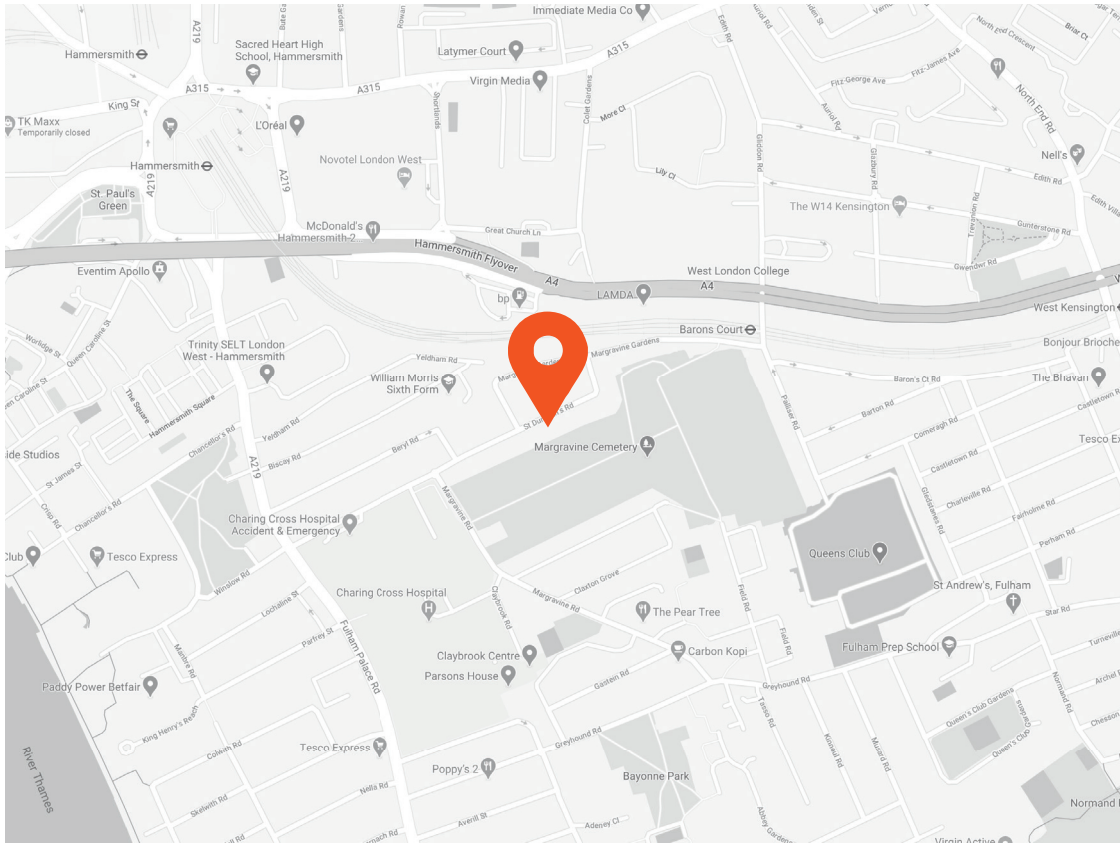
First Floor
673 sq ft / 62.5 sq m



Second Floor
245 sq ft / 22.8 sq m



Ground Floor
38 sq ft / 3.5 sq m



Score	Energy rating	Current	Potential
92+	A		
81-91	B		
69-80	C		79 C
55-68	D		
39-54	E	41 E	
21-38	F		
1-20	G		



This recyclable brochure has been produced in good faith to give a general guide. We have not undertaken a structural survey, nor have we tested the services or appliances. All measurements are approximate and the lease details where applicable must be confirmed by the solicitor. Brochure prepared by Colourbrush.

aspire.co.uk

Transport Links

- Barons Court (0.2 miles)
- West Kensington (0.5 miles)
- Hammersmith (0.7 miles)

Aspire Fulham South

+44 (0) 20 7736 6110
fulham@aspire.co.uk

Aspire Fulham Central

+44 (0) 20 7381 7381
c.fulham@aspire.co.uk

