





This larger than average purpose built two bedroom flat benefits from being on the first floor with balcony views into the communal gardens. The property is positioned just off the Peterborough Road which allows for a quick walk to Parsons Green tube station and the surrounding amenities.

The flat comprises two large bedrooms with ample built-in storage, a well fitted kitchen and a large living room with plenty of space to dine. The living room leads onto the generous balcony making it perfect for the coming summer months.

A very competitively priced property, it is a real must see and prior booking is very much recommended.







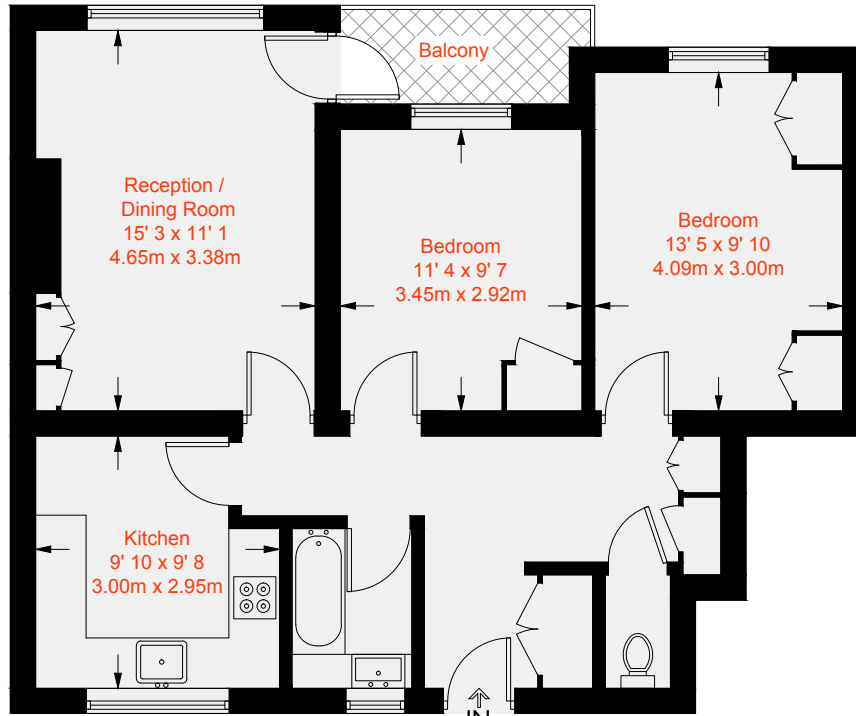






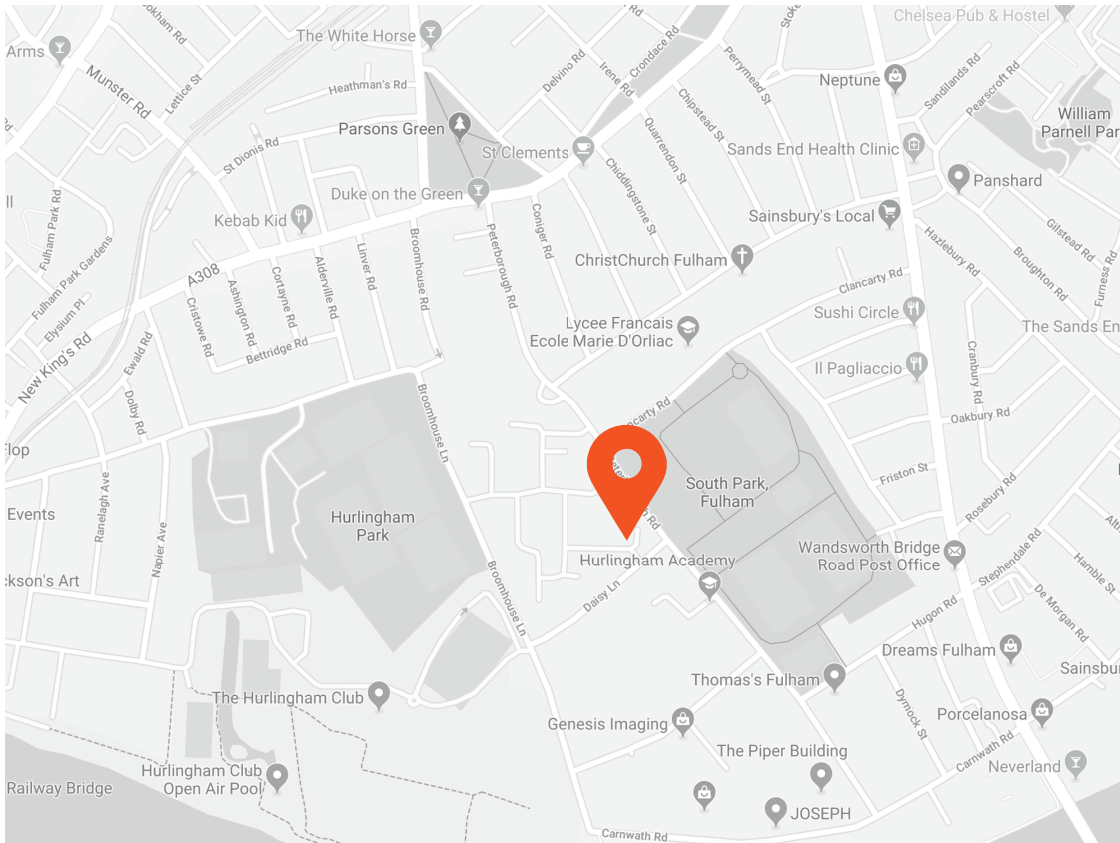


Approximate Gross Internal Area = 715 sq ft / 66.4 sq m



First Floor





Score	Energy rating	Current	Potential
92+	A		
81-91	B		81   B
69-80	C	73   C	
55-68	D		
39-54	E		
21-38	F		
1-20	G		



This recyclable brochure has been produced in good faith to give a general guide. We have not undertaken a structural survey, nor have we tested the services or appliances. All measurements are approximate and the lease details where applicable must be confirmed by the solicitor. Brochure prepared by Colourbrush.

[aspire.co.uk](http://aspire.co.uk)

**Transport Links**

- Parsons Green (0.6 miles)
- Putney Bridge (0.8 miles)
- Fulham Broadway (1.0 miles)

**Aspire Fulham South**  
 +44 (0) 20 7736 6110  
[fulham@aspire.co.uk](mailto:fulham@aspire.co.uk)

**Aspire Fulham Central**  
 +44 (0) 20 7381 7381  
[c.fulham@aspire.co.uk](mailto:c.fulham@aspire.co.uk)

