



Beautifully refurbished, this 701 sq ft two bedroom apartment is set just off Peterborough Road next to South Park. Providing two very large double bedrooms, the property has been refurbished to a high level and provides a modern kitchen with granite worktops, plenty of worktop space and storage plus all the appliances one could wish for.

The main reception is 15ft long with access to a private balcony. Close to the park it is part of a well managed block and a must see for anyone looking to stretch their budget in one of Fulham's most sought-after locations.

Close to the entrance to South Park, it is a short stroll to Parsons Green Tube Station and close to all of the bars, shops and restaurants of both the Wandsworth Bridge Road and Parsons Green.



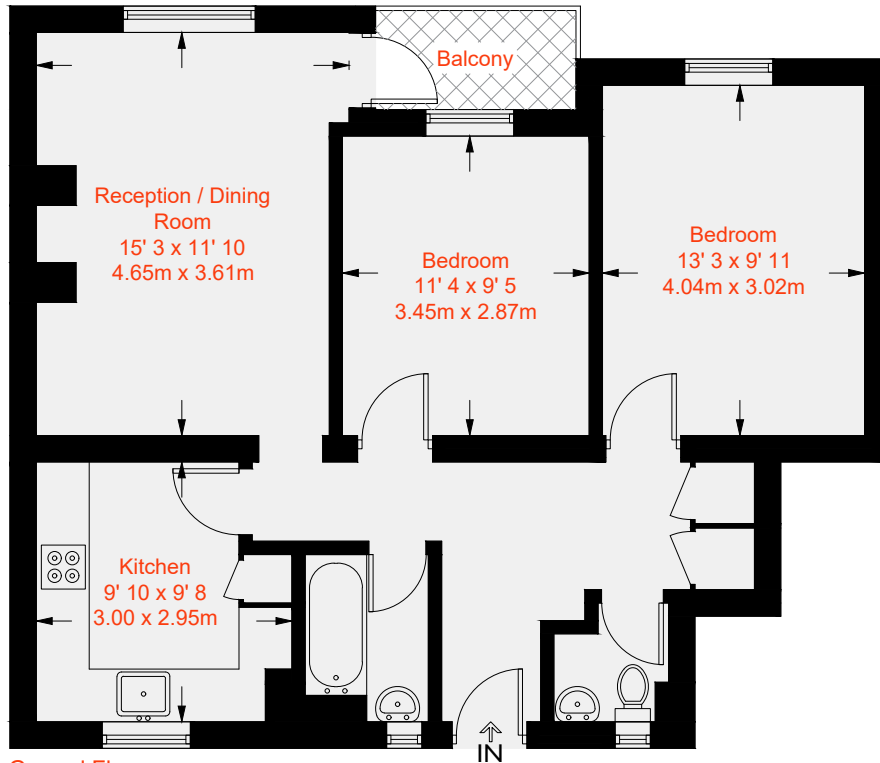




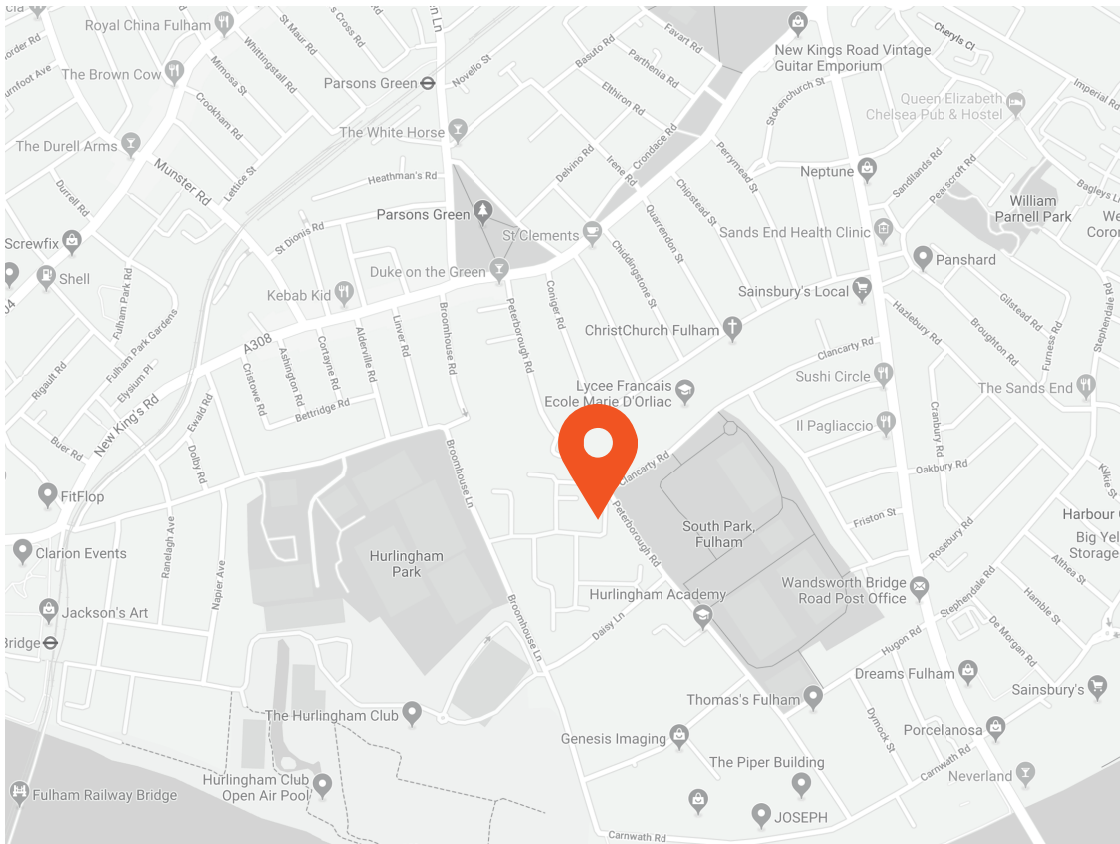




Approximate Gross Internal Area = 701 sq ft / 65.1 sq m



Ground Floor



Score	Energy rating	Current	Potential
92+	A		
81-91	B		
69-80	C		80 C
55-68	D	67 D	
39-54	E		
21-38	F		
1-20	G		



This recyclable brochure has been produced in good faith to give a general guide. We have not undertaken a structural survey, nor have we tested the services or appliances. All measurements are approximate and the lease details where applicable must be confirmed by the solicitor. Brochure prepared by Colourbrush.

aspire.co.uk

Transport Links

- Parsons Green (0.6 miles)
- Putney Bridge (0.7 miles)
- Fulham Broadway (1.0 miles)

Aspire Fulham South

+44 (0) 20 7736 6110
fulham@aspire.co.uk

Aspire Fulham Central

+44 (0) 20 7381 7381
c.fulham@aspire.co.uk

