



Presented with the entire freehold to the property, this top floor flat has the potential to extend with a pod or terrace subject to relevant permissions.

The property is laid out with the classic Sands End mezzanine kitchen at the top. Light and bright it has plenty of storage and work surfaces as well as a dining area for parties and dinner evenings.

The front reception has the double height ceilings and is likewise flooded with light through the velux windows at the top, large period bay windows as well as ambient light from the mezzanine level. The property benefits from two large double bedrooms as well as a family bathroom and en-suite shower room to the master. Presented in good condition it is a super find in the location - and a rare opportunity to buy a flat with the entire freehold.

Placed on the ever popular Stephendale Road, the property is larger than most on the street with one of the larger gardens for the area. Within easy walking distance to Wandsworth Town, Parsons Green and Imperial Wharf stations. Conveniently located for the shops, bars and restaurants of Wandsworth Bridge Road as well as the nearby Sainsburys superstore.

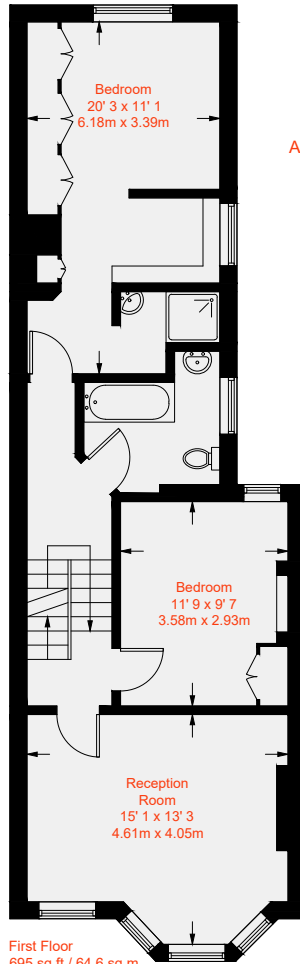










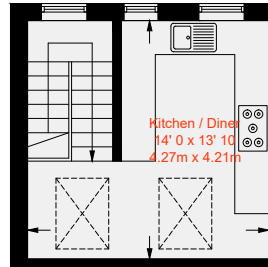


First Floor  
 695 sq ft / 64.6 sq m

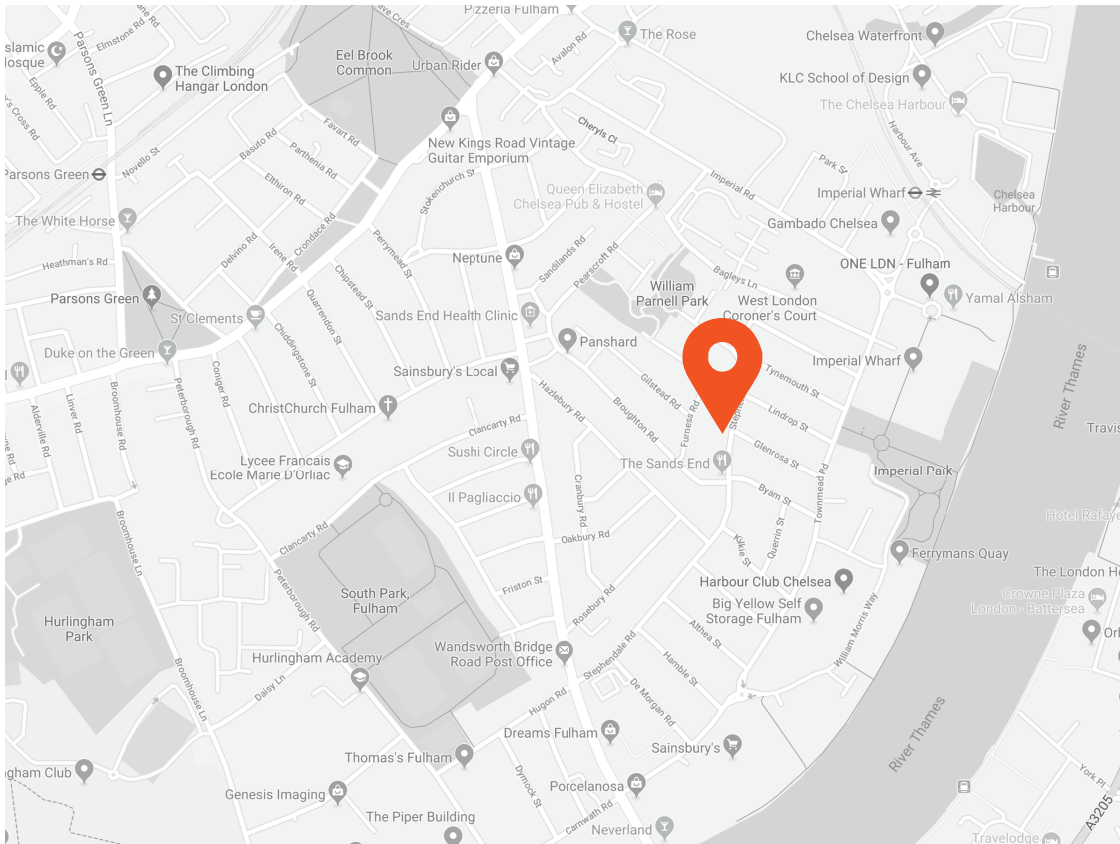
Approximate Gross Internal Area = 900 sq ft / 83.7 q m



Ground Floor  
 7 sq ft / 0.7 sq m



Mezzanine  
 198 sq ft / 18.4 sq m



### Transport Links

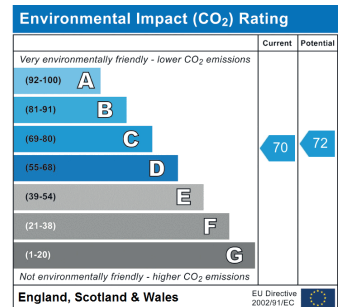
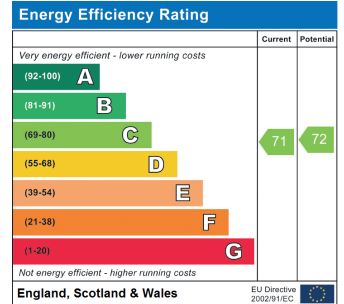
- Imperial Wharf (0.4 miles)
- Fulham Broadway (0.9 miles)
- Wandsworth Town (0.9 miles)

### Aspire Fulham South

+44 (0) 20 7736 6110  
fulham@aspire.co.uk

### Aspire Fulham Central

+44 (0) 20 7381 7381  
c.fulham@aspire.co.uk



This recyclable brochure has been produced in good faith to give a general guide. We have not undertaken a structural survey, nor have we tested the services or appliances. All measurements are approximate and the lease details where applicable must be confirmed by the solicitor. Brochure prepared by Colourbrush.

aspire.co.uk

