



Presenting a stunning home, stylishly redecorated and extended by its current owner. This property is end of terrace making it wider than the norm and giving it a feeling of space unusual to the area.

The ground floor has heated floors throughout and has a well lit snug reception room to the front. The downstairs WC is perfect for parties and entertaining, while the main room is the huge kitchen reception with wood effect ceramic tiling. The kitchen reception is vast with bi-fold doors out to the garden where the tiling continues. The property also benefits from a large utility room off the main reception.

As you would expect the bedroom accommodation is similarly sized with four very large double bedrooms and four en-suite bath and shower rooms as well as plenty of storage. One of the most incredible family homes in South Fulham.

Breer Street is situated just south of the pretty green space that is South Park and is within walking distance to Parsons Green, Imperial Wharf and Wandsworth Town stations, and is close to a lot of the sought-after local schools.

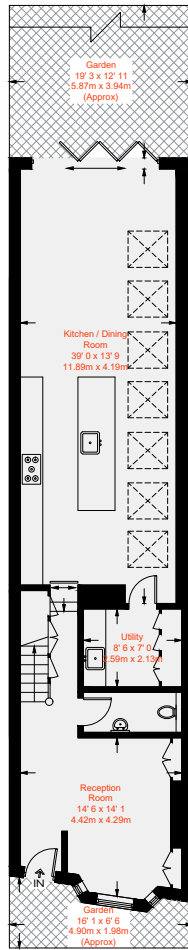






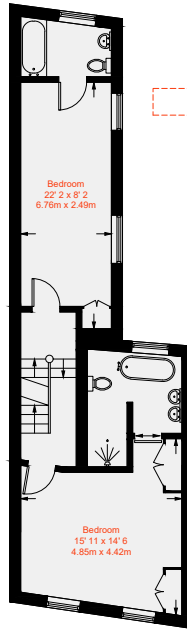




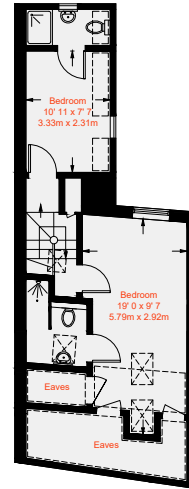


Ground Floor
921 sq ft / 85.6 sq m

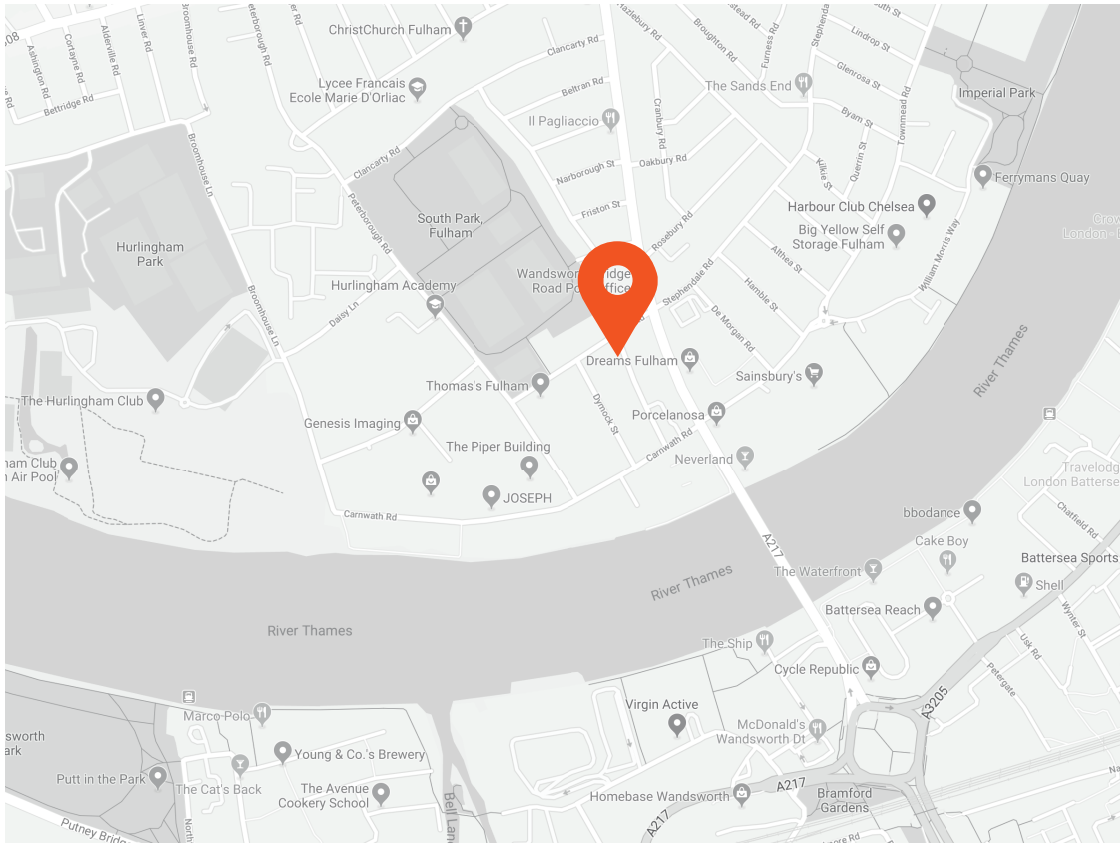
Approximate Gross Internal Area = 1840 sq ft / 171.1 sq m
(Excluding Reduced Headroom / Eaves)
Reduced Headroom / Eaves = 121 sq ft / 11.2 sq m
Total = 1961 sq ft / 182.3 sq m



First Floor
570 sq ft / 53 sq m



Second Floor
470 sq ft / 43.7 sq m
(Including Reduced Headroom / Eaves)



Score	Energy rating	Current	Potential
92+	A		
81-91	B		
69-80	C	77 C	84 B
55-68	D		
39-54	E		
21-38	F		
1-20	G		



This recyclable brochure has been produced in good faith to give a general guide. We have not undertaken a structural survey, nor have we tested the services or appliances. All measurements are approximate and the lease details where applicable must be confirmed by the solicitor. Brochure prepared by Colourbrush.

aspire.co.uk

Transport Links

- Wandsworth Town (0.6 miles)
- Imperial Wharf (0.7 miles)
- Parsons Green (0.8 miles)

Aspire Fulham South

+44 (0) 20 7736 6110
fulham@aspire.co.uk

Aspire Fulham Central

+44 (0) 20 7381 7381
c.fulham@aspire.co.uk

