



Presenting one of Munster Village's most unique and charming apartments, this property centres around a huge kitchen, reception room with stylish mezzanine above with elegant spiral stair case access. The open plan reception is 24 ft long with double height ceilings giving an incredible feel of space and style with a wood finish throughout.

The property benefits from three double bedrooms with two bathrooms - ideal for sharers or people that like to entertain and is set in the heart of Munster Village's shops, bars and restaurants.

Subject to freeholder and relevant permissions, there would be the opportunity to build out on the second floor to add more accommodation, outside space or even create a new flat. All in all, an amazing flat to live in and one with plenty of opportunity to expand in the future, both for life and for profit.

The flat is only a short walk away from the many local amenities of both the Fulham and Munster Roads and around a ten minute stroll to Parsons Green tube.











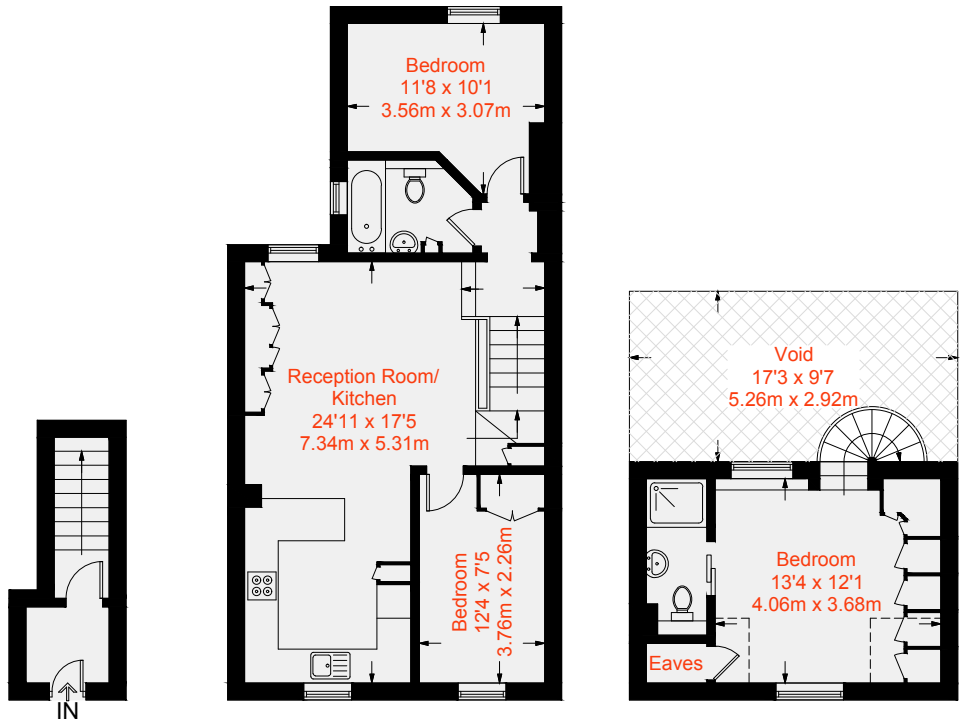


Approximate Gross Internal Area = 865 sq ft / 80.4 sq m

(Excluding Reduce Headroom / Eaves Storage)

Reduced Eaves Storage = 8 sq ft / 0.7 sq m = Reduced Head Height

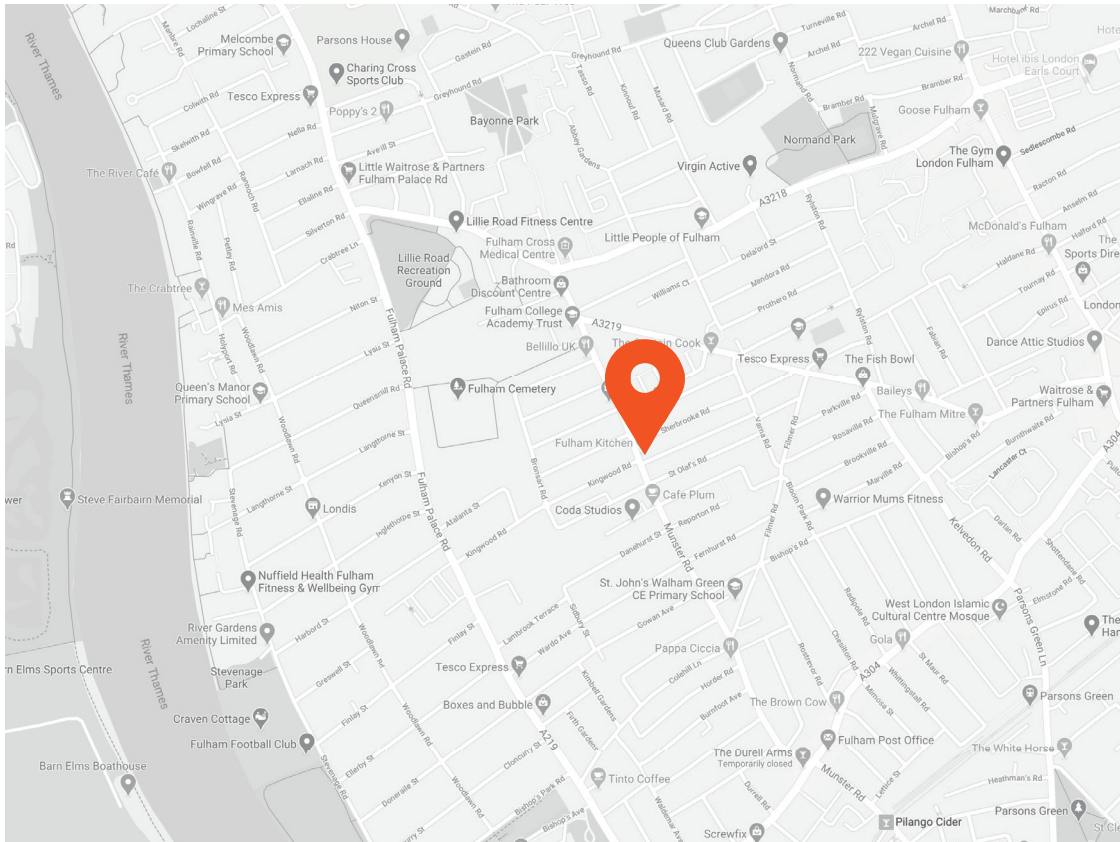
Total = 873 sq ft / 81.1 sq m



Ground Floor
56 sq ft / 5.2 sq m

First Floor
607 sq ft / 56.4 sq m

Second Floor
210 sq ft / 19.5 sq m



Score	Energy rating	Current	Potential
92+	A		
81-91	B		
69-80	C		
55-68	D	55 D	75 C
39-54	E		
21-38	F		
1-20	G		



This recyclable brochure has been produced in good faith to give a general guide. We have not undertaken a structural survey, nor have we tested the services or appliances. All measurements are approximate and the lease details where applicable must be confirmed by the solicitor. Brochure prepared by Colourbrush.

aspire.co.uk

Transport Links

- Parsons Green (0.7 miles)
- Fulham Broadway (0.8 miles)
- Barons Court (1.0 miles)

Aspire Fulham South

+44 (0) 20 7736 6110
fulham@aspire.co.uk

Aspire Fulham Central

+44 (0) 20 7381 7381
c.fulham@aspire.co.uk