



A truly fantastic one bed, split-level, first floor flat in an excellent location in Fulham.

The property has been recently converted and refurbished to provide immaculate and stylish living space. The open plan kitchen/dining/living area has an attractive, part glazed, vaulted ceiling which floods the room with light. The kitchen includes fully fitted appliances together with solid limestone worktops. Stairs lead from this room down to a private 40ft west facing garden, complete with garden shed.

Up a small flight of stairs from the hallway is the large double bedroom complete with built-in double wardrobe. There is a large well fitted bathroom with underfloor heating.

Excellent transport links are available on the flats doorstep, with buses on the Fulham Palace Road linking to the rest of Fulham and Hammersmith. Putney Bridge and Parsons Green underground stations are both within walking distance.

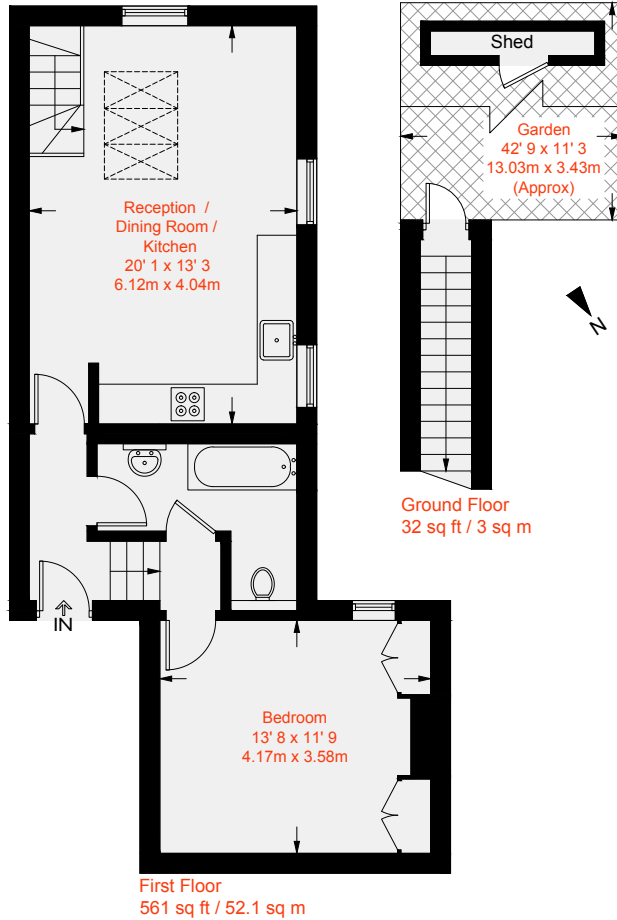


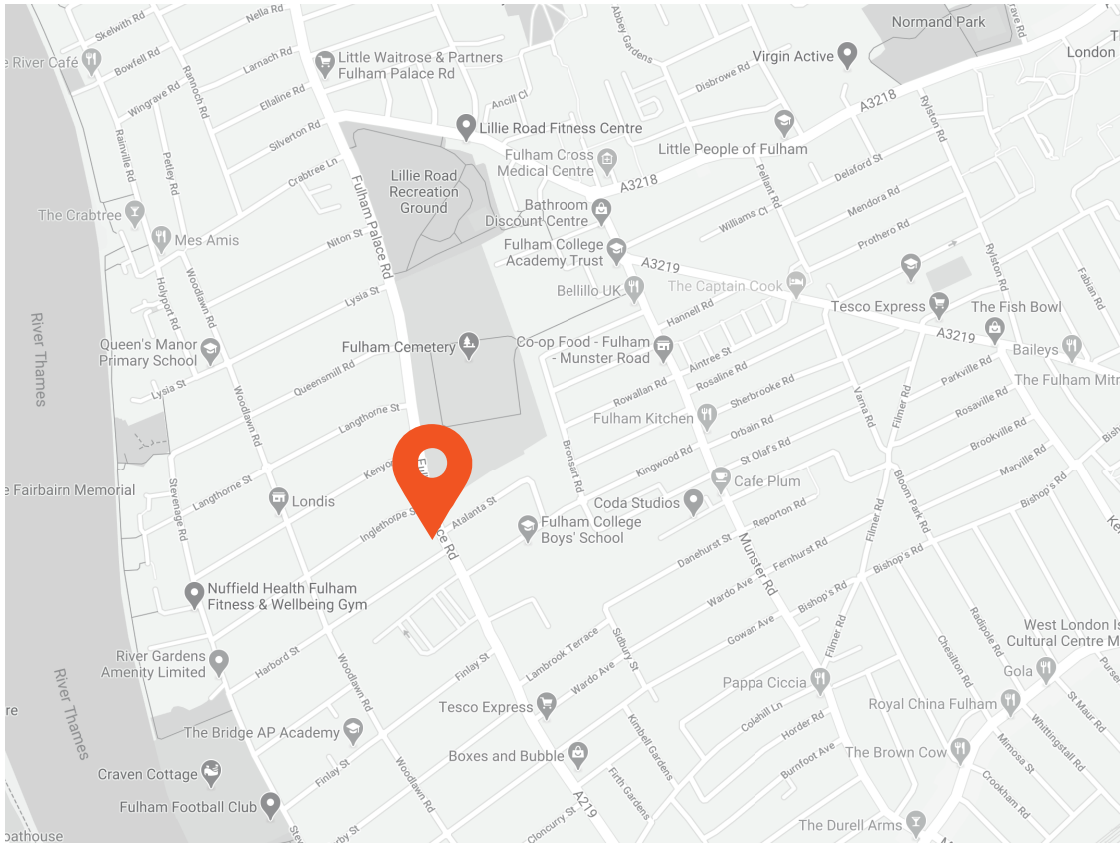






Approximate Gross Internal Area = 593 sq ft / 55.1 sq m
(Excluding Shed)





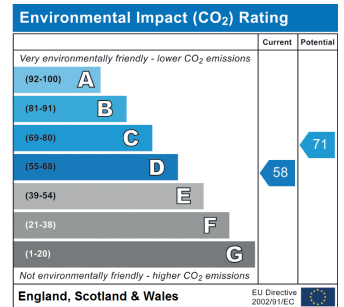
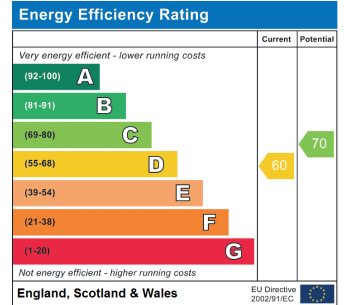
Transport Links

- Putney Bridge (0.8 miles)
- Parsons Green (1.0 miles)
- Barons Court (1.1 miles)

Aspire Fulham South
 +44 (0) 20 7736 6110
 fulham@aspire.co.uk

Aspire Fulham Central
 +44 (0) 20 7381 7381
 c.fulham@aspire.co.uk

Battersea ● Fulham South ● Fulham Central ● Balham ● Clapham South ● Clapham High Street ● Furzedown



This recyclable brochure has been produced in good faith to give a general guide. We have not undertaken a structural survey, nor have we tested the services or appliances. All measurements are approximate and the lease details where applicable must be confirmed by the solicitor. Brochure prepared by Colourbrush.

aspire.co.uk

