



A rare opportunity to buy this large unmodernised two bedroom flat.

The property benefits from a good sized balcony and double glazing throughout.

The property is in a great location being sandwiched between Hurlingham Park to the west and South Park to the east. Parsons Green tube station is only a few minutes' walk away along with the numerous shops, bars and restaurants of the New Kings Road.



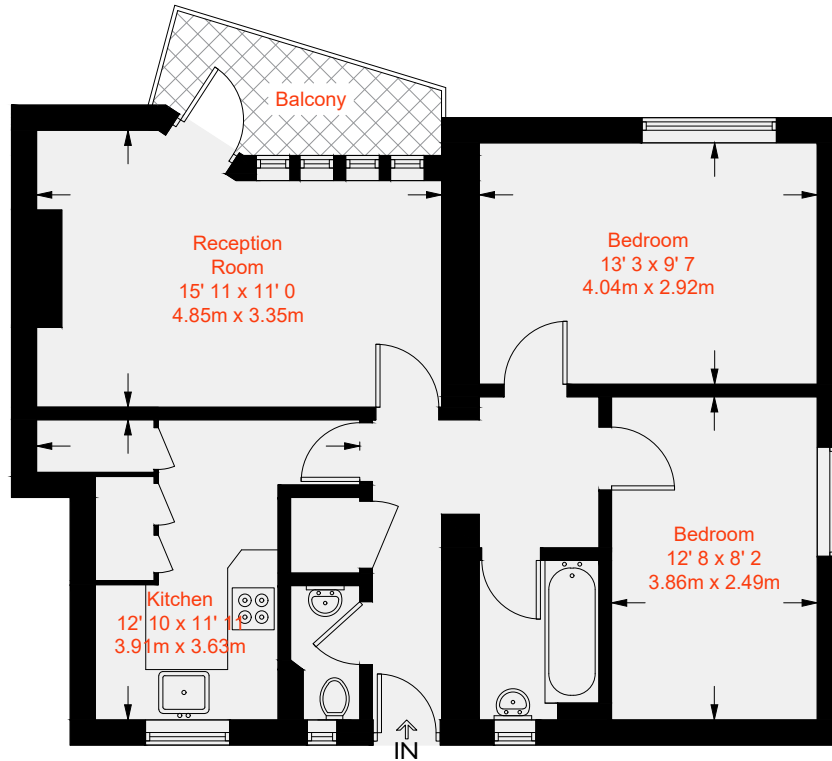




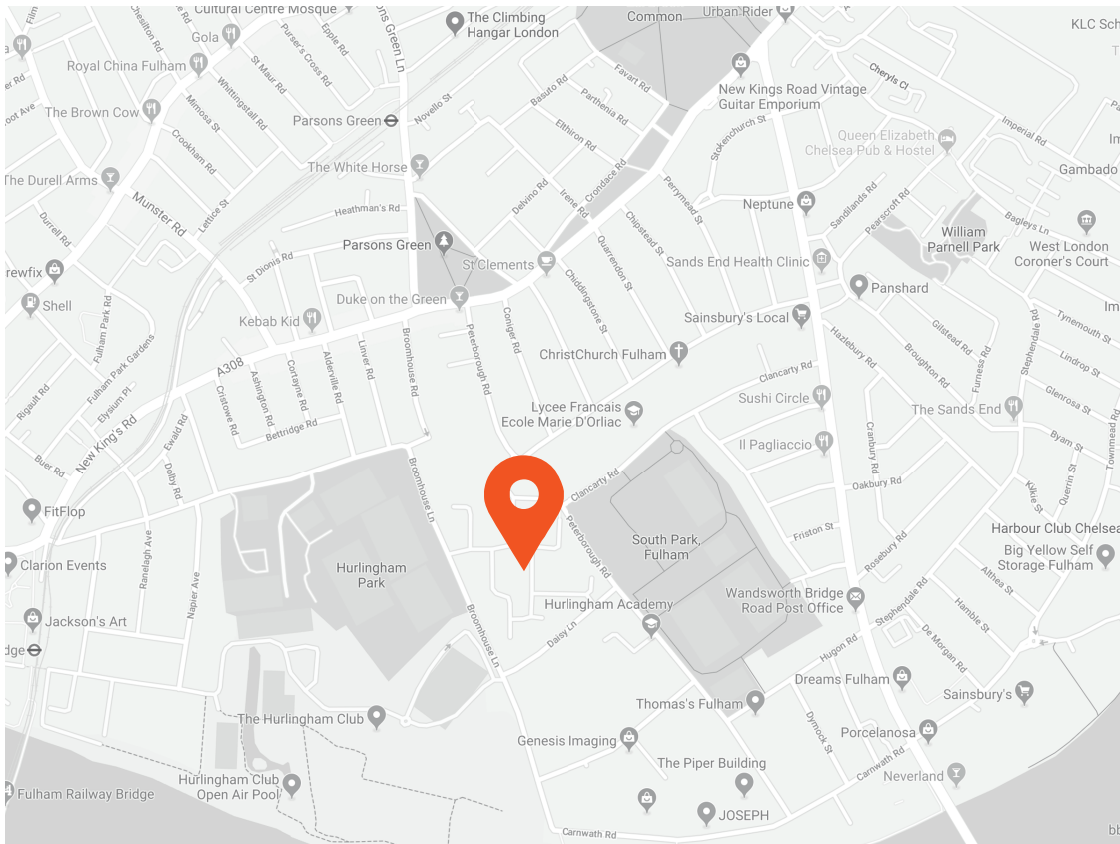




Approximate Gross Internal Area = 677 sq ft / 62.9 sq m



Second Floor



Energy Efficiency Rating		Current	Potential
Very energy efficient - lower running costs			
(92-100)	A		
(81-91)	B		
(69-80)	C		
(55-68)	D		
(39-54)	E		
(21-38)	F		
(1-20)	G		
Not energy efficient - higher running costs			
England, Scotland & Wales		EU Directive 2002/91/EC	



This recyclable brochure has been produced in good faith to give a general guide. We have not undertaken a structural survey, nor have we tested the services or appliances. All measurements are approximate and the lease details where applicable must be confirmed by the solicitor. Brochure prepared by Colourbrush.

aspire.co.uk

Transport Links

- Parsons Green (0.6 miles)
- Putney Bridge (0.7 miles)
- Fulham Broadway (1.0 miles)

Aspire Fulham South

+44 (0) 20 7736 6110
fulham@aspire.co.uk

Aspire Fulham Central

+44 (0) 20 7381 7381
c.fulham@aspire.co.uk

