



A delightful one bedroom apartment in the heart of South Fulham, this unique property has high ceilings and is a corner property meaning that it is flooded with light providing a very vibrant feel throughout the flat.

The reception room is open plan to the kitchen through double doors which is superb for parties, while the bedroom is up to 16 ft in length, so a truly wonderful size. The bathroom is spacious and the property even benefits from a substantial storage cupboard - ideal for frequent flyer baggage!

Presented in immaculate condition the flat is set on Furness Road, a quiet street in a very favourable area of Fulham moments from the bustling café and restaurant culture of Wandsworth Bridge Road. Likewise it is still within short walks from the transport links of Fulham Broadway, Imperial Warf and Chelsea Harbour.





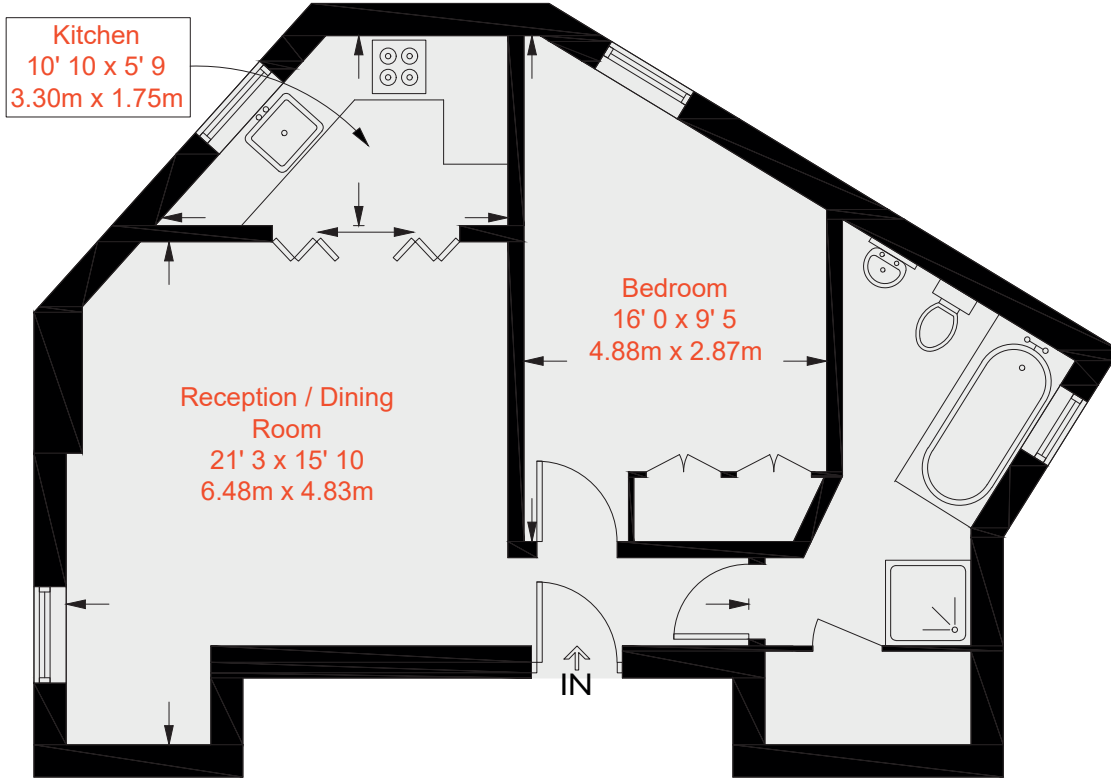




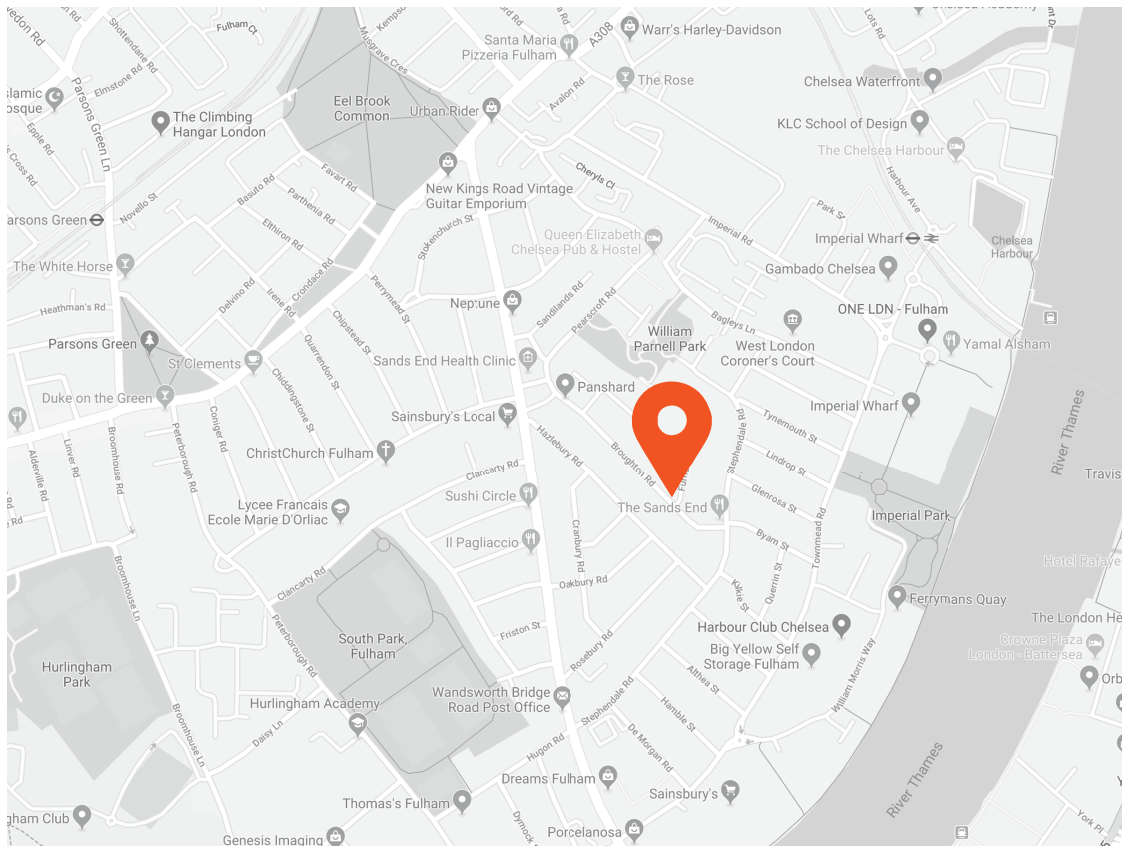




Approximate Gross Internal Area = 491 sq ft / 45.6 sq m



First Floor



Energy Efficiency Rating		Current	Potential
Very energy efficient - lower running costs			
(92-100)	A		
(81-91)	B		
(69-80)	C		
(55-68)	D	65	67
(39-54)	E		
(21-38)	F		
(1-20)	G		
Not energy efficient - higher running costs			
England, Scotland & Wales		EU Directive 2002/91/EC	

Environmental Impact (CO ₂) Rating		Current	Potential
Very environmentally friendly - lower CO ₂ emissions			
(92-100)	A		
(81-91)	B		
(69-80)	C		
(55-68)	D	67	68
(39-54)	E		
(21-38)	F		
(1-20)	G		
Not environmentally friendly - higher CO ₂ emissions			
England, Scotland & Wales		EU Directive 2002/91/EC	



This recyclable brochure has been produced in good faith to give a general guide. We have not undertaken a structural survey, nor have we tested the services or appliances. All measurements are approximate and the lease details where applicable must be confirmed by the solicitor. Brochure prepared by Colourbrush.

aspire.co.uk

Transport Links

- Imperial Wharf (0.5 miles)
- Fulham Broadway (0.8 miles)
- Parsons Green (0.9 miles)

Aspire Fulham South
 +44 (0) 20 7736 6110
fulham@aspire.co.uk

Aspire Fulham Central
 +44 (0) 20 7381 7381
c.fulham@aspire.co.uk

