

Aspire

Hazlebury Road SW6
Fulham, 2 Beds 1 Bath



A wonderful, two double bedroom garden flat set in the extremely popular 'Bury Triangle' area of Fulham.

This split-level property boasts fantastic living space, two double bedrooms, a lovely eat-in kitchen and a shared garden at the rear. The property is finished to a good standard throughout.

Hazlebury Road is set only moments away from the Wandsworth Bridge Road and many local amenities such as bars, shops and restaurants. Parsons Green and Fulham Broadway tube stations are close by as well as Wandsworth Town and Imperial Wharf main line stations.



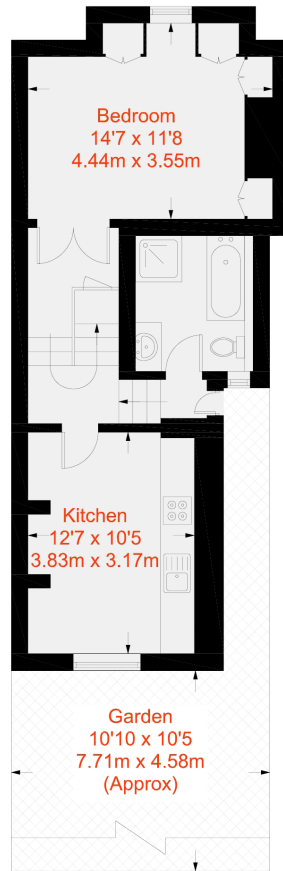




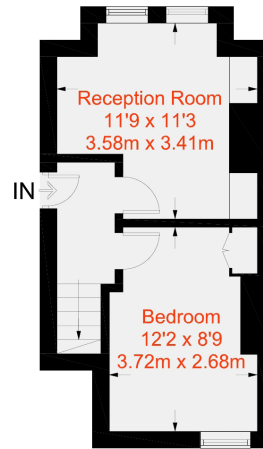




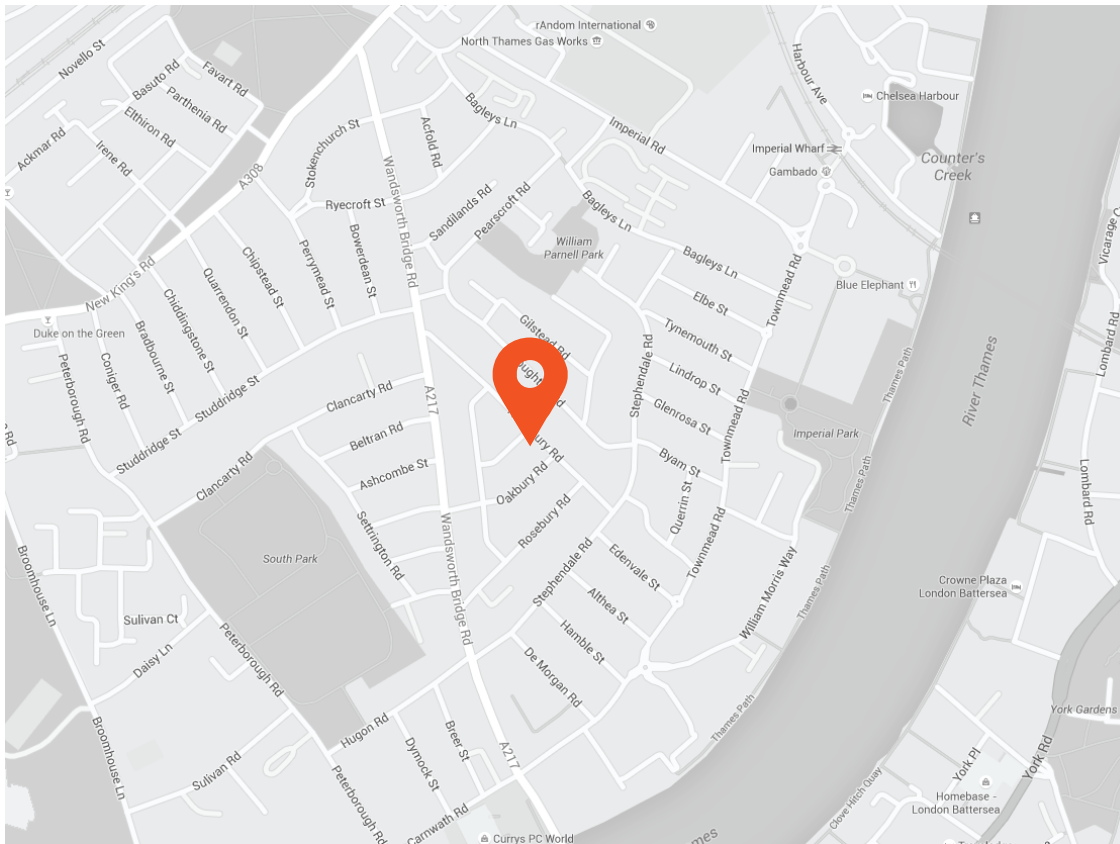
Approximate Gross Internal Area = 730 sq ft / 67.8 sq m



Lower Ground Floor
460 sq ft / 42.7 sq m



Ground Floor
270 sq ft / 25 sq m



Transport Links

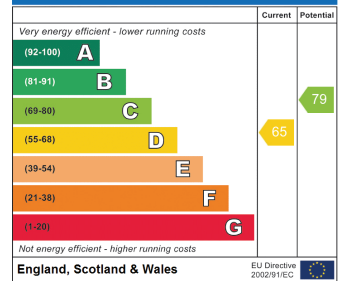
- Imperial Wharf (0.6 miles)
- Parsons Green (0.8 miles)
- Fulham Broadway (0.8 miles)

Aspire Fulham South
 +44 (0) 20 7736 6110
 fulham@aspire.co.uk

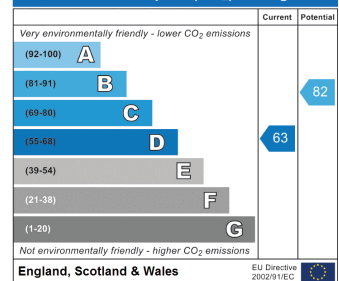
Aspire Fulham Central
 +44 (0) 20 7381 7381
 c.fulham@aspire.co.uk

Battersea ● Fulham South ● Fulham Central ● Balham ● Clapham South ● Clapham High Street ● Furzedown

Energy Efficiency Rating



Environmental Impact (CO₂) Rating



This recyclable brochure has been produced in good faith to give a general guide. We have not undertaken a structural survey, nor have we tested the services or appliances. All measurements are approximate and the lease details where applicable must be confirmed by the solicitor. Brochure prepared by Colourbrush.

aspire.co.uk

