



A beautiful cottage house close to South Park, this four bedroom house has a beautiful entrance with virginia creeper providing a delightful backdrop and has the benefit of a front mansard extension, rare in today's market.

The property has a long open plan reception on the ground floor leading out to the 50 ft west-facing garden, it has its fourth bedroom to the rear. With plenty of opportunity to extend subject to relevant permissions, it is incredibly rare to find a garden of this size.

Upstairs are a further two bedrooms and bathroom, while on the top floor is a huge room with good ceiling height which could be used as is, has plenty of space to accommodate a large en-suite bathroom or even split into two sizable bedrooms.

Close to the entrance of South Park, Dymock Street is a quiet residential road close to Imperial Wharf Station and all the bars, shops and restaurants of Wandsworth Bridge Road, and also the Sainsburys Mega Store - one of the largest in Europe. It also benefits from the Q parking Zone allowing owners to drive up to Parsons Green and park in inclement weather or have a delightful stroll through the park to the tube in the morning.

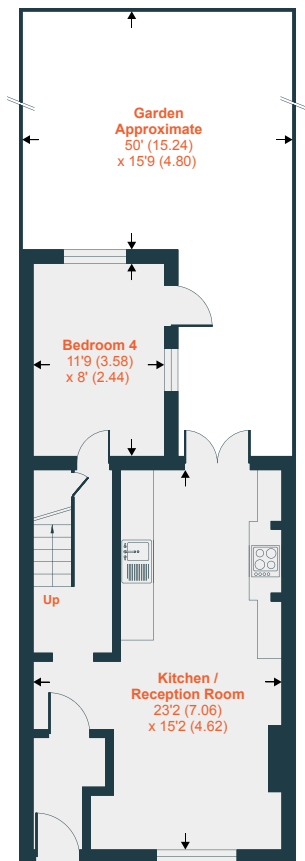




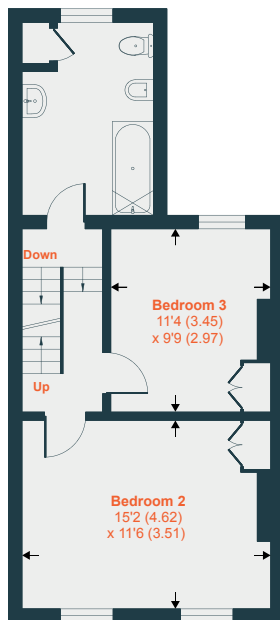




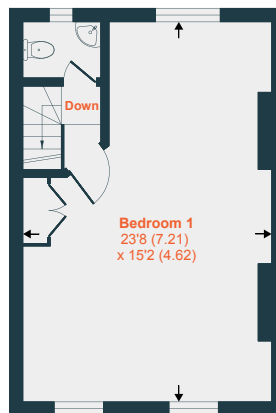




GROUND FLOOR



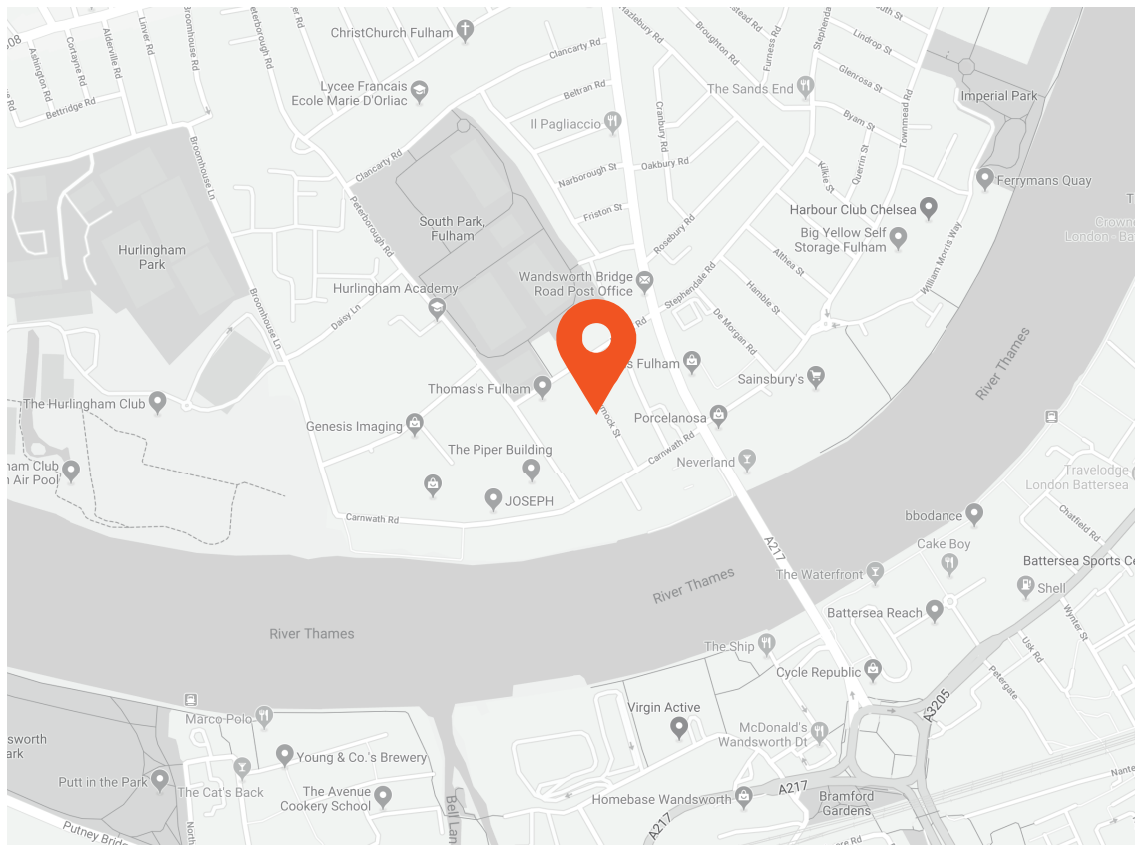
FIRST FLOOR



SECOND FLOOR

Approximate Area = 1255 sq ft / 116.5 sq m

For identification only - Not to scale



Transport Links

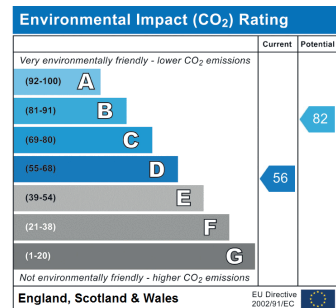
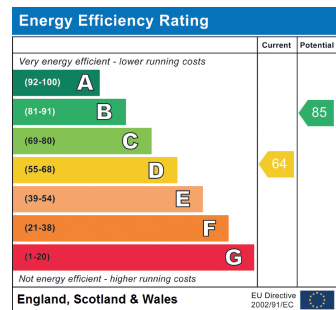
- Wandsworth Town (0.6 miles)
- Imperial Wharf (0.8 miles)
- Parsons Green (0.8 miles)

Aspire Fulham South

+44 (0) 20 7736 6110
fulham@aspire.co.uk

Aspire Fulham Central

+44 (0) 20 7381 7381
c.fulham@aspire.co.uk



This recyclable brochure has been produced in good faith to give a general guide. We have not undertaken a structural survey, nor have we tested the services or appliances. All measurements are approximate and the lease details where applicable must be confirmed by the solicitor. Brochure prepared by Colourbrush.

aspire.co.uk



Battersea ● Fulham South ● Fulham Central ● Balham ● Clapham South ● Clapham High Street ● Furzedown