



A stunning and well maintained split-level maisonette in the heart of Fulham, featuring two spacious double bedrooms with en-suite bathrooms, located on a highly desirable residential street. With its own private front door, an impressive reception room with a double-height ceiling and natural light, a well fitted gallery kitchen/breakfast room on the mezzanine level, south facing balcony and a cloakroom in the hallway. The property is in excellent decorative order throughout and has the potential to create a rear roof terrace and additional living space from the kitchen, subject to relevant consents.

The property on Colehill Lane is conveniently located a short walk from the tranquil setting of Bishops Park and many excellent shops, bars and restaurants on the Fulham Road. Bishops Park recently benefitted from much investment and has a bustling cafe, a play area for children, a farmers market (Sunday's) and tennis courts, as well as scenic riverside walks. Also close by is the historic Fulham Palace and the Thames River path, ideal for weekend park runners and families spanning all generations.

The property benefits from being within the catchment area of many popular Fulham nurseries and primary schools such as; All Saints C of E primary school, Fulham prep, Kensington prep for Girls and Sinclair House. The nearest underground station is Putney Bridge (District line, Zone 2) and there are many frequent direct bus routes into central London from the Fulham Road or Fulham Palace Road.



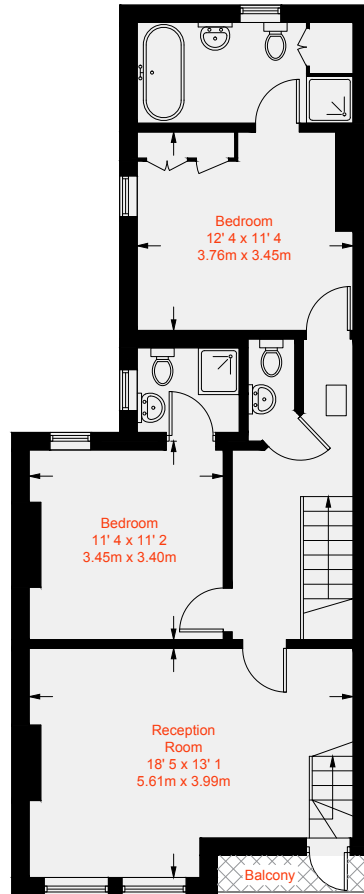




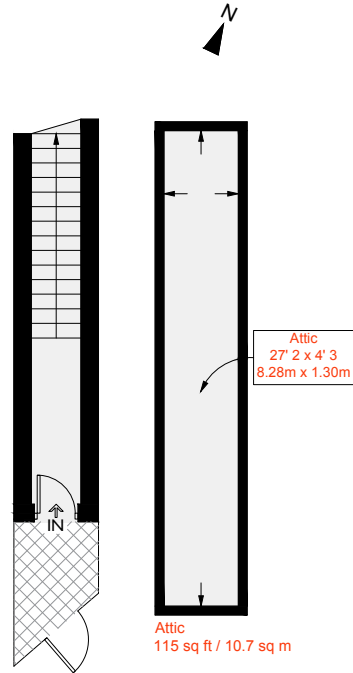




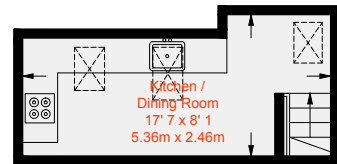
Approximate Gross Internal Area = 1037 sq ft / 96.4 sq m
(Including Attic)



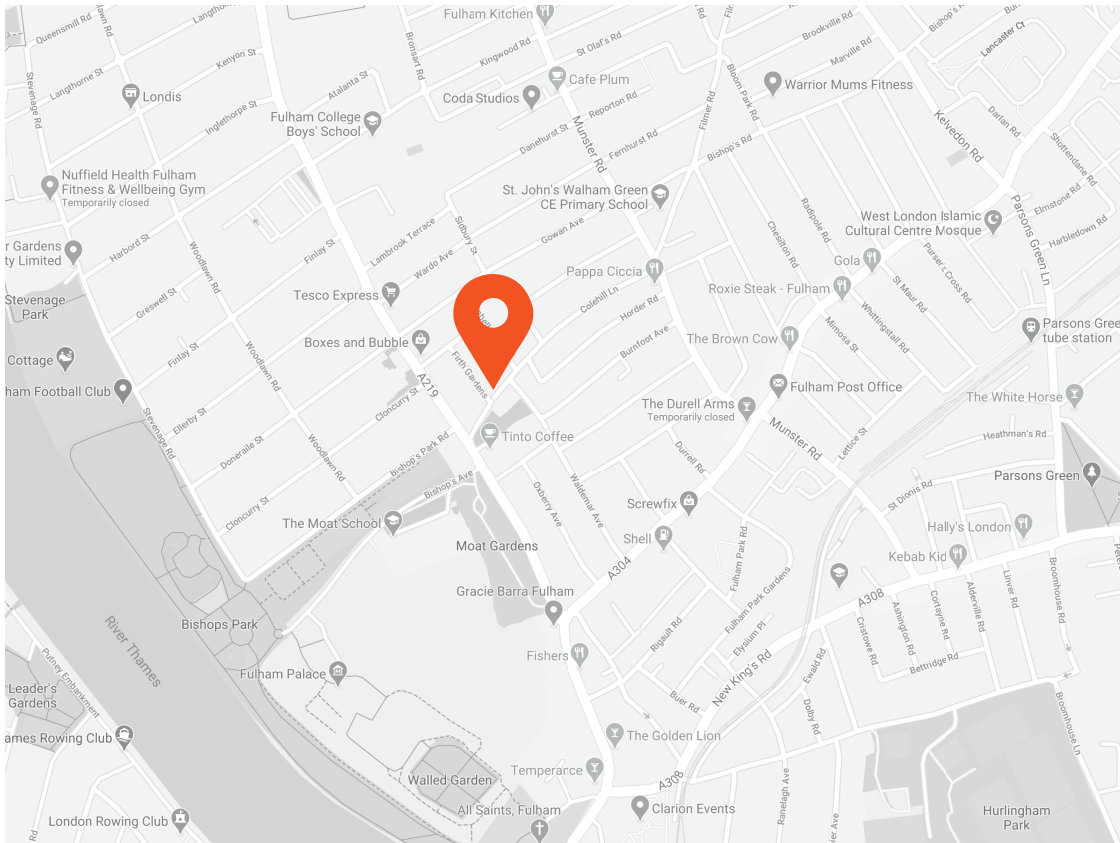
First Floor
734 sq ft / 68.2 sq m



Ground Floor
62 sq ft / 5.8 sq m



Second Floor
126 sq ft / 11.7 sq m



Transport Links

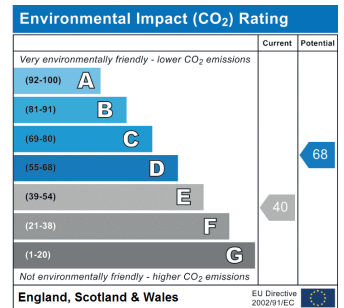
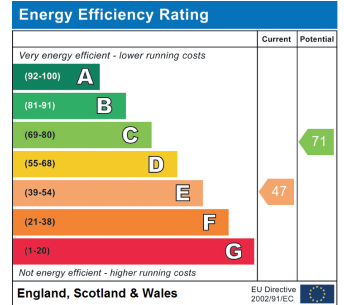
- Putney Bridge (0.6 miles)
- Parsons Green (0.7 miles)
- Fulham Broadway (1.0 miles)

Aspire Fulham South

+44 (0) 20 7736 6110
fulham@aspire.co.uk

Aspire Fulham Central

+44 (0) 20 7381 7381
c.fulham@aspire.co.uk



This recyclable brochure has been produced in good faith to give a general guide. We have not undertaken a structural survey, nor have we tested the services or appliances. All measurements are approximate and the lease details where applicable must be confirmed by the solicitor. Brochure prepared by Colourbrush.

aspire.co.uk

