



An absolutely gorgeous top floor three bedroom property set in the ever popular 'Bury Triangle' in South Fulham.

The flat is beautifully finished throughout and offers bright living space from corner to corner. The property has wonderful wooden floors in the sitting room and the kitchen has been recently refurbished. The rest of the property offers three double bedrooms and two bathrooms; one of which is en-suite to the loft room.

Oakbury Road is set just off the Wandsworth Bridge Road and is in an ideal position for access to many local amenities. Some of these include, local bus stops, a short walk to South Park, Wandsworth Town and Imperial Wharf stations and the many bars shops and restaurants of both the Wandsworth Bridge and New Kings Roads.



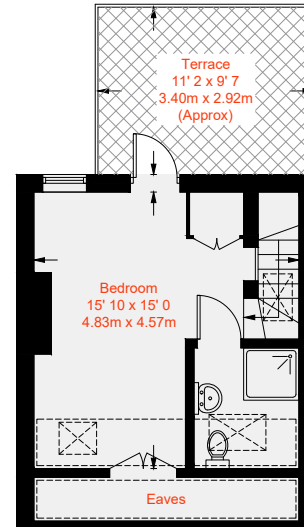
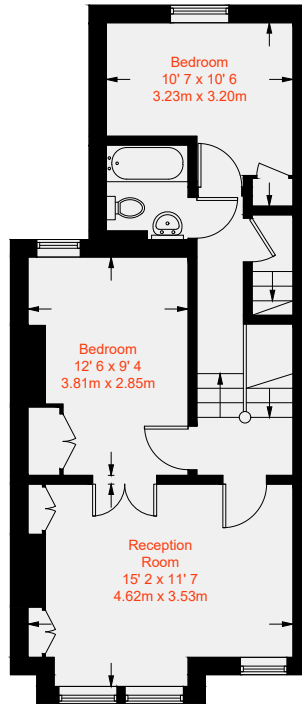
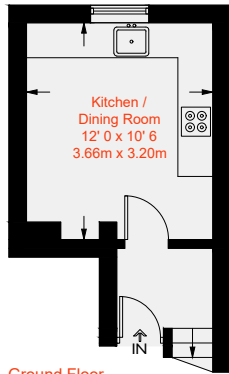


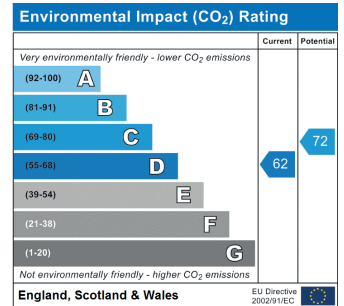
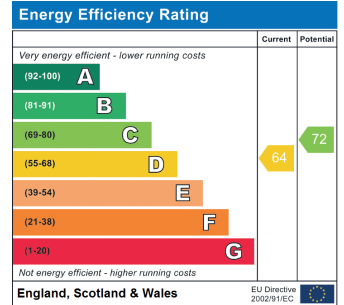
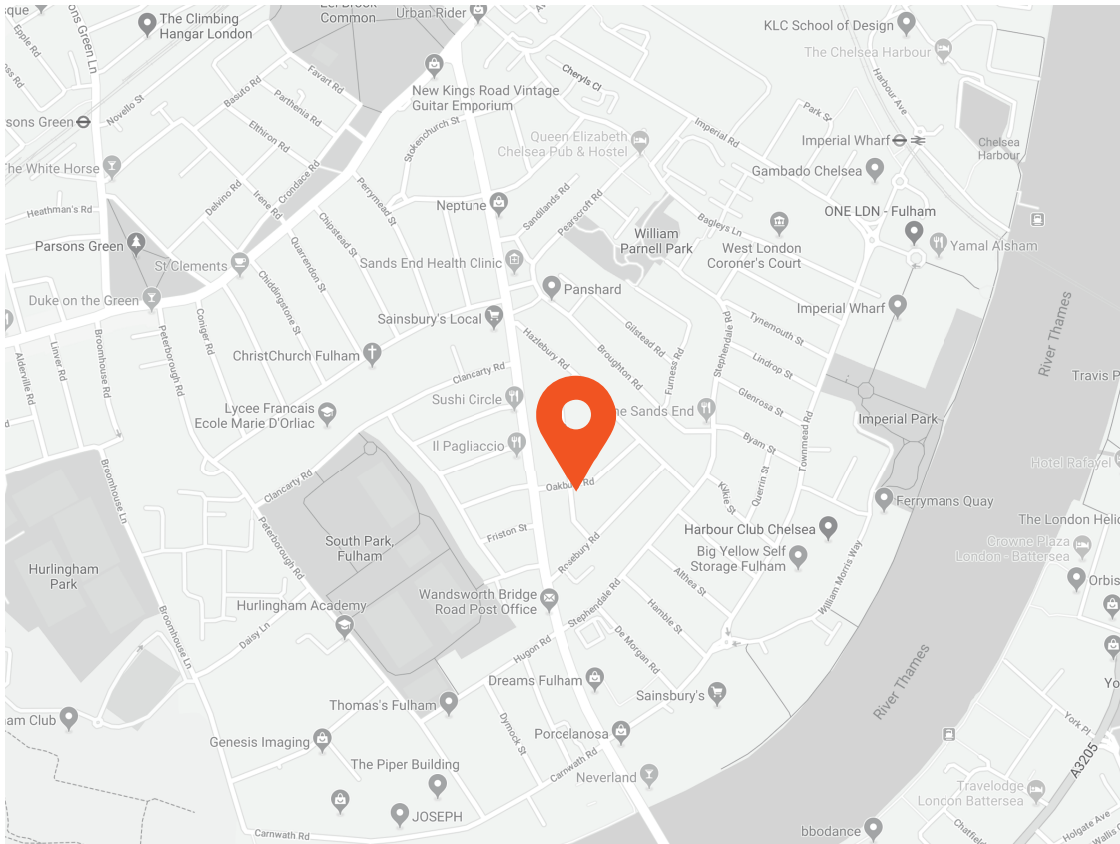






Approximate Gross Internal Area = 880 sq ft / 81.7 sq m  
(Excluding Reduced Headroom / Eaves)  
Reduced Headroom / Eaves = 72 sq ft / 6.7 sq m  
Total = 952 sq ft / 88.4 sq m





This recyclable brochure has been produced in good faith to give a general guide. We have not undertaken a structural survey, nor have we tested the services or appliances. All measurements are approximate and the lease details where applicable must be confirmed by the solicitor. Brochure prepared by Colourbrush.

#### Transport Links

- Imperial Wharf (0.6 miles)
- Wandsworth Town (0.8 miles)
- Fulham Broadway (0.8 miles)

#### Aspire Fulham South

+44 (0) 20 7736 6110  
fulham@aspire.co.uk

#### Aspire Fulham Central

+44 (0) 20 7381 7381  
c.fulham@aspire.co.uk

aspire.co.uk

