



Newly refurbished, this two bedroom two bathroom apartment is superb value located on a quiet road near the riverside in West Fulham.

The property is set on the first floor of the block with its own entrance and private terrace. Well laid out it provides two double bedrooms, one with en-suite shower room and the other serviced by a large communal bathroom. The living room is open plan to a modern kitchen. All in all superb value for the price.

Stevenage Road is located within walking distance of Bishops Park, the popular River Cafe, both Putney Bridge and Hammersmith underground stations as well as the many bus links on Fulham Palace Road. The property is being offered with no onward chain.



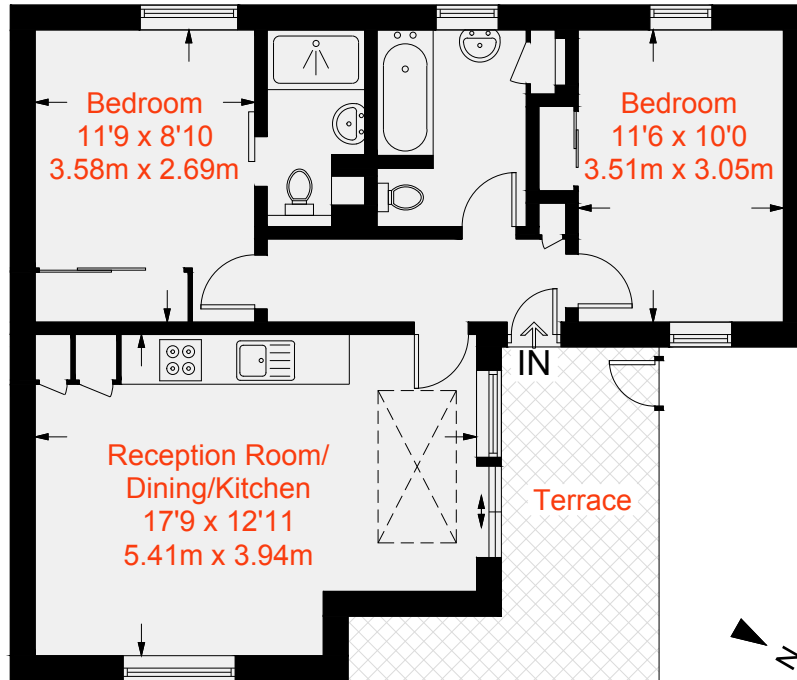




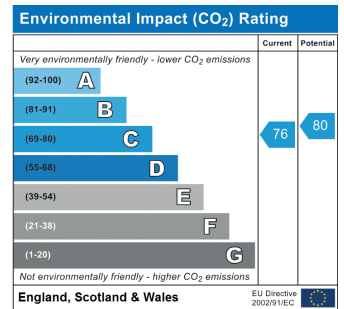
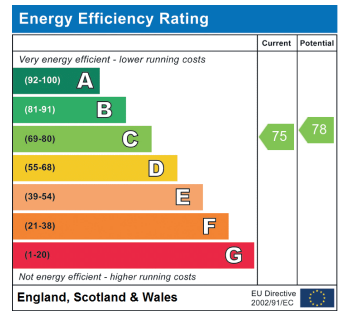
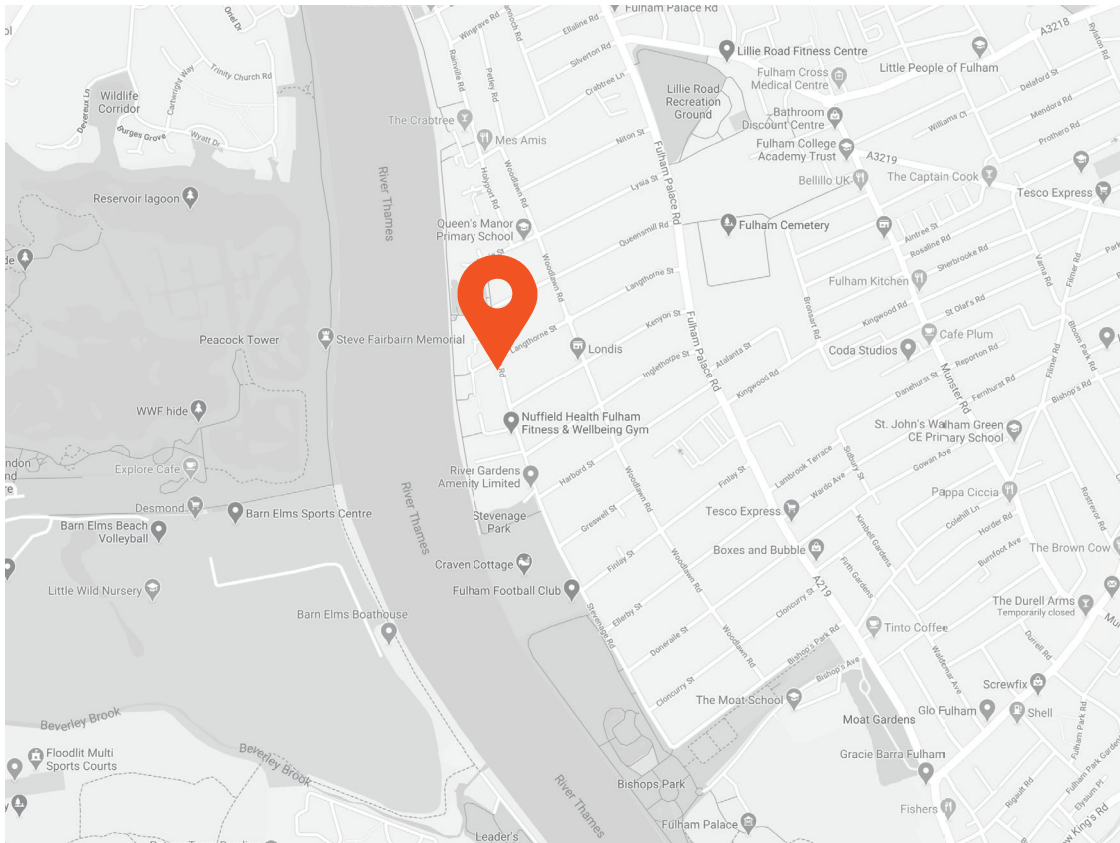




Approximate Gross Internal Area = 580 sq ft / 53.9 sq m



First Floor



This recyclable brochure has been produced in good faith to give a general guide. We have not undertaken a structural survey, nor have we tested the services or appliances. All measurements are approximate and the lease details where applicable must be confirmed by the solicitor. Brochure prepared by Colourbrush.

[aspire.co.uk](http://aspire.co.uk)

**Transport Links**  
 - Putney Bridge (1.0 miles)  
 - Hammersmith (1.2 miles)

**Aspire Fulham South**  
 +44 (0) 20 7736 6110  
[fulham@aspire.co.uk](mailto:fulham@aspire.co.uk)

**Aspire Fulham Central**  
 +44 (0) 20 7381 7381  
[c.fulham@aspire.co.uk](mailto:c.fulham@aspire.co.uk)

