



A fantastic two bedroom two reception room property which is presented in good order with a large 28 ft garden. The property comprises two equal sized double bedrooms on the ground floor, all comfortably proportioned to allow for a double bed and separate wardrobes, dressing table and other furniture if desired. The reception room is also on the ground floor leading out to the garden and can be used as a third bedroom. The kitchen is located on the lower ground floor, also with access to the family bathroom and the garden. A pretty paved garden is located at the rear of the property and is accessible from both the reception room and the third bedroom.

A short walk to Parsons Green tube station which is conveniently located only 0.6 miles away, the flat is close to the popular Joes Brasserie, Sainsburys and many more local bars or restaurants. An ideal first time purchase or pied-a-terre close to the Green.



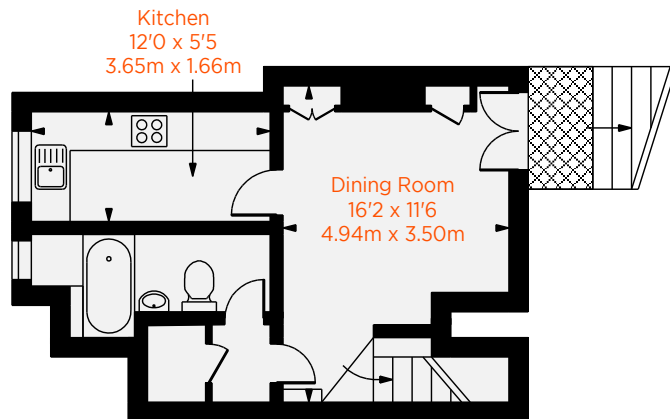




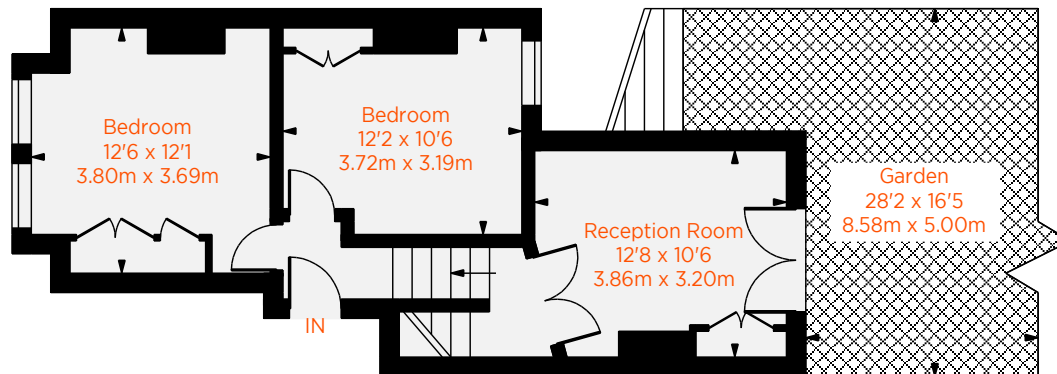




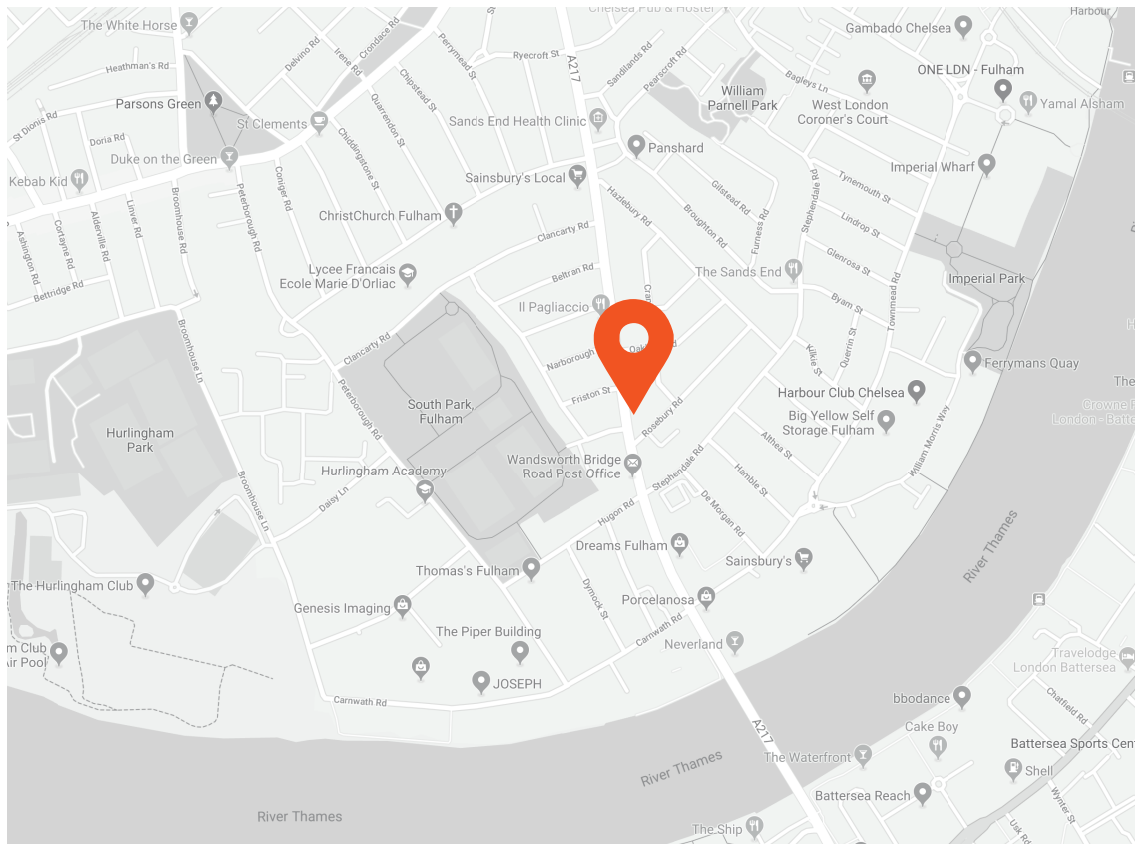
Approximate Gross Internal Area :- 814 sq ft / 75.63 sq m



Lower Ground Floor
336 sq ft / 31.22 sq m



Ground Floor
478 sq ft / 44.41 sq m



Transport Links

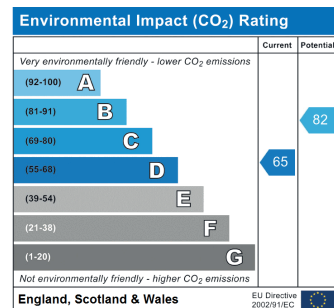
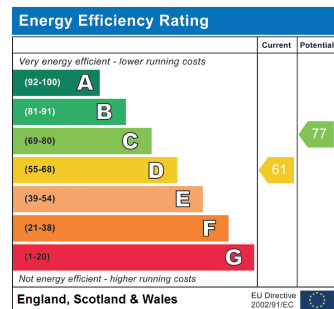
- Wandsworth Town (0.7 miles)
- Imperial Wharf (0.7 miles)
- Parsons Green (0.9 miles)

Aspire Fulham South

+44 (0) 20 7736 6110
fulham@aspire.co.uk

Aspire Fulham Central

+44 (0) 20 7381 7381
c.fulham@aspire.co.uk



This recyclable brochure has been produced in good faith to give a general guide. We have not undertaken a structural survey, nor have we tested the services or appliances. All measurements are approximate and the lease details where applicable must be confirmed by the solicitor. Brochure prepared by Colourbrush.

aspire.co.uk



rightmove Zoopla

Battersea ● Fulham South ● Fulham Central ● Balham ● Clapham South ● Clapham High Street ● Furzedown