



With higher than usual ceilings, an enormous reception and three double bedrooms, this property is superbly located adjoining the popular Fulham 'Villes'.

The first floor accommodation comprises three double bedrooms with a large communal bathroom and separate WC on the first floor. The master bedroom is of a very substantial size, while there is a spacious kitchen.

Upstairs the loft has higher than normal ceilings and has been converted into an enormous reception room with plenty of dining space. Subject to normal permissions, there is plenty of potential to add a terrace off the reception as the flat roof is already accessible through large windows and ripe for conversion. There is also a lot of scope to change this large flat to make it perfect for modern living.

Varna Road adjoins the exclusive 'Villes' of Central Fulham and is walking distance to Parsons Green Tube as well as the nearby shops, bars, restaurants and nightlife surrounding the Parsons Green hub.



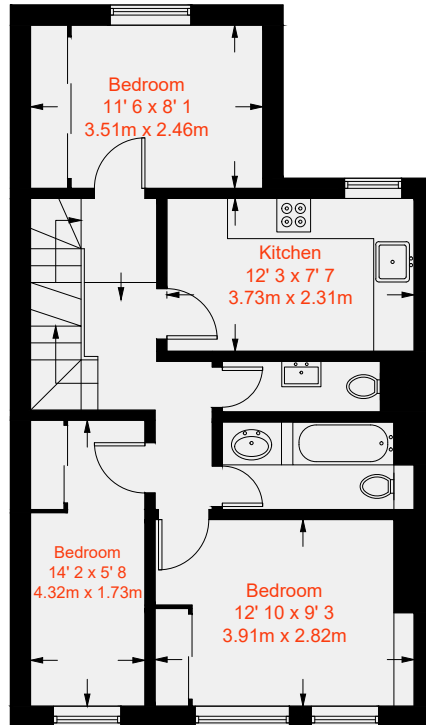





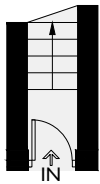
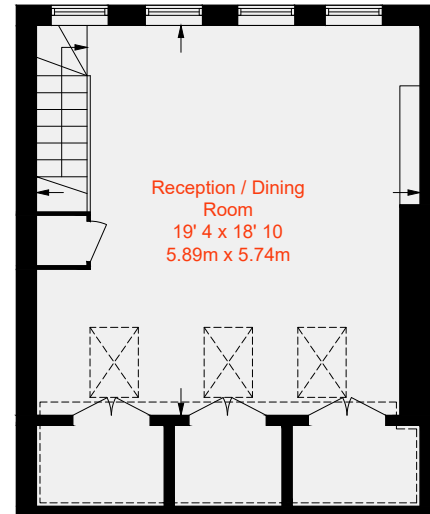




Approximate Gross Internal Area = 956 sq ft / 88.8 sq m
(Excluding Reduced Headroom)
Reduced Headroom = 92 sq ft / 8.6 sq m
Total = 1048 sq ft / 97.4 sq m



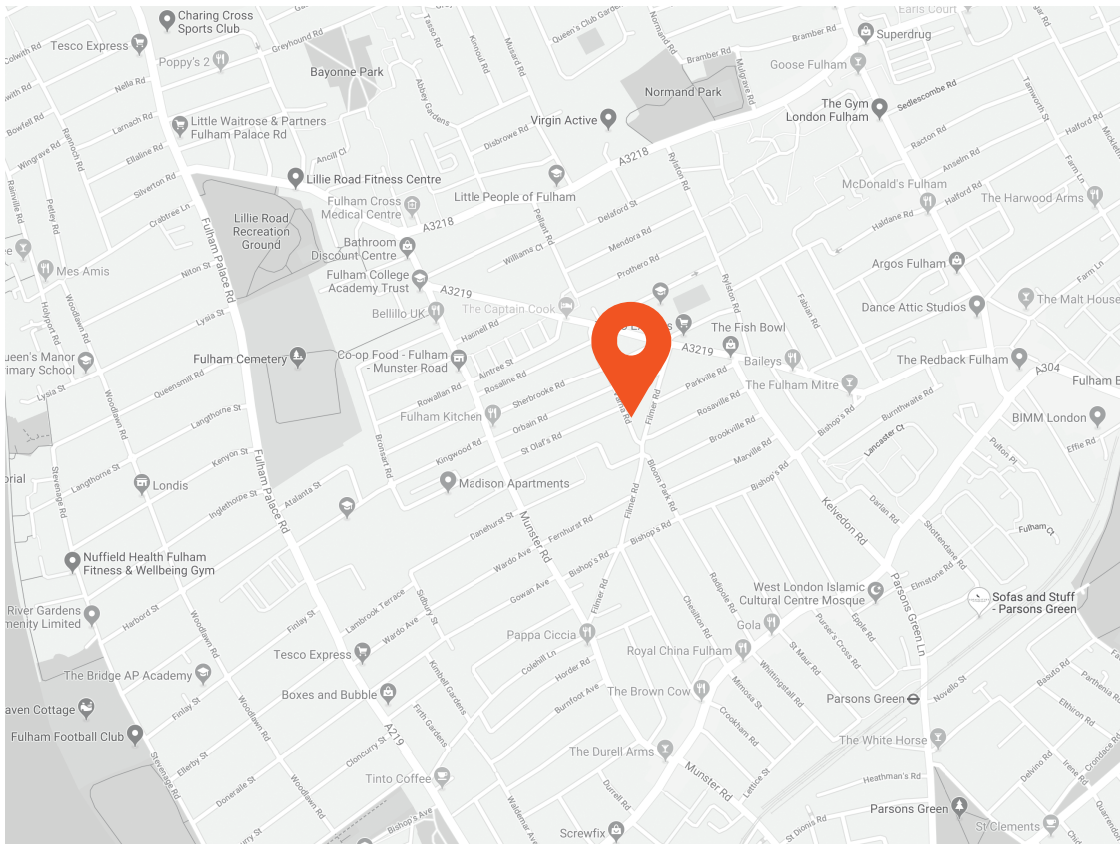
 = Reduced headroom below 1.5m / 5'0



Ground Floor
18 sq ft / 1.7 sq m

First Floor
577 sq ft / 53.6 sq m

Second Floor
453 sq ft / 42.1 sq m
(Including Reduced Headroom)



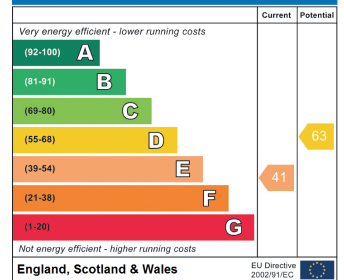
Transport Links

- Parsons Green (0.5 miles)
- Fulham Broadway (0.7 miles)
- West Brompton (0.9 miles)

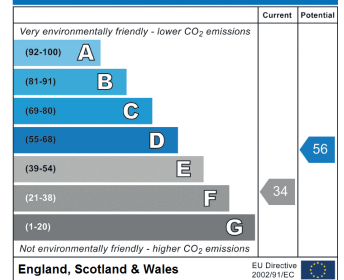
Aspire Fulham South
 +44 (0) 20 7736 6110
 fulham@aspire.co.uk

Aspire Fulham Central
 +44 (0) 20 7381 7381
 c.fulham@aspire.co.uk

Energy Efficiency Rating



Environmental Impact (CO₂) Rating



This recyclable brochure has been produced in good faith to give a general guide. We have not undertaken a structural survey, nor have we tested the services or appliances. All measurements are approximate and the lease details where applicable must be confirmed by the solicitor. Brochure prepared by Colourbrush.

aspire.co.uk

