



Coming soon to the market. An immaculate and high specification four bedroom family home that is being completely re-built from the ground up. For further information and specification, please contact your Aspire representative or call the office to register early interest.



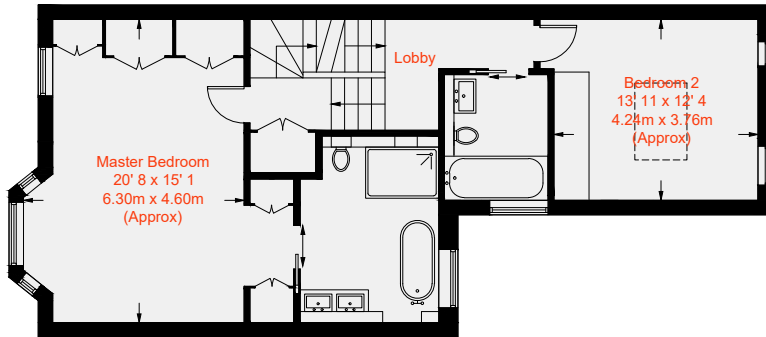




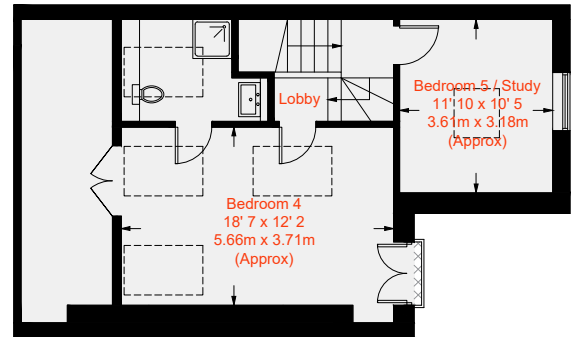




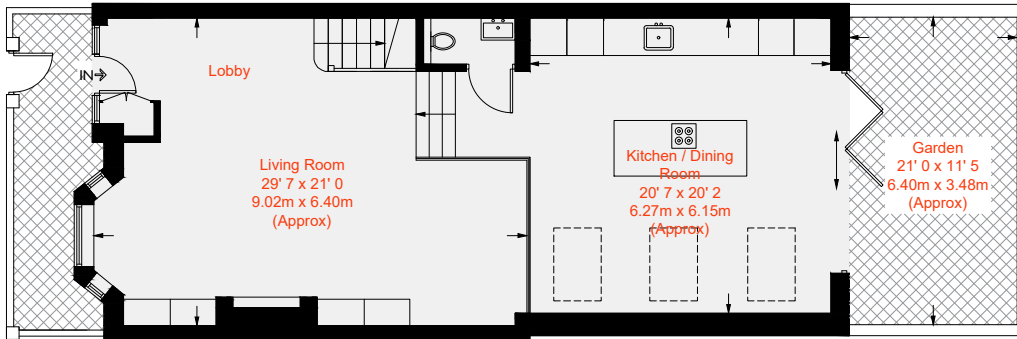
Approximate Gross Internal Area = 2527 sq ft / 234.8 sq m



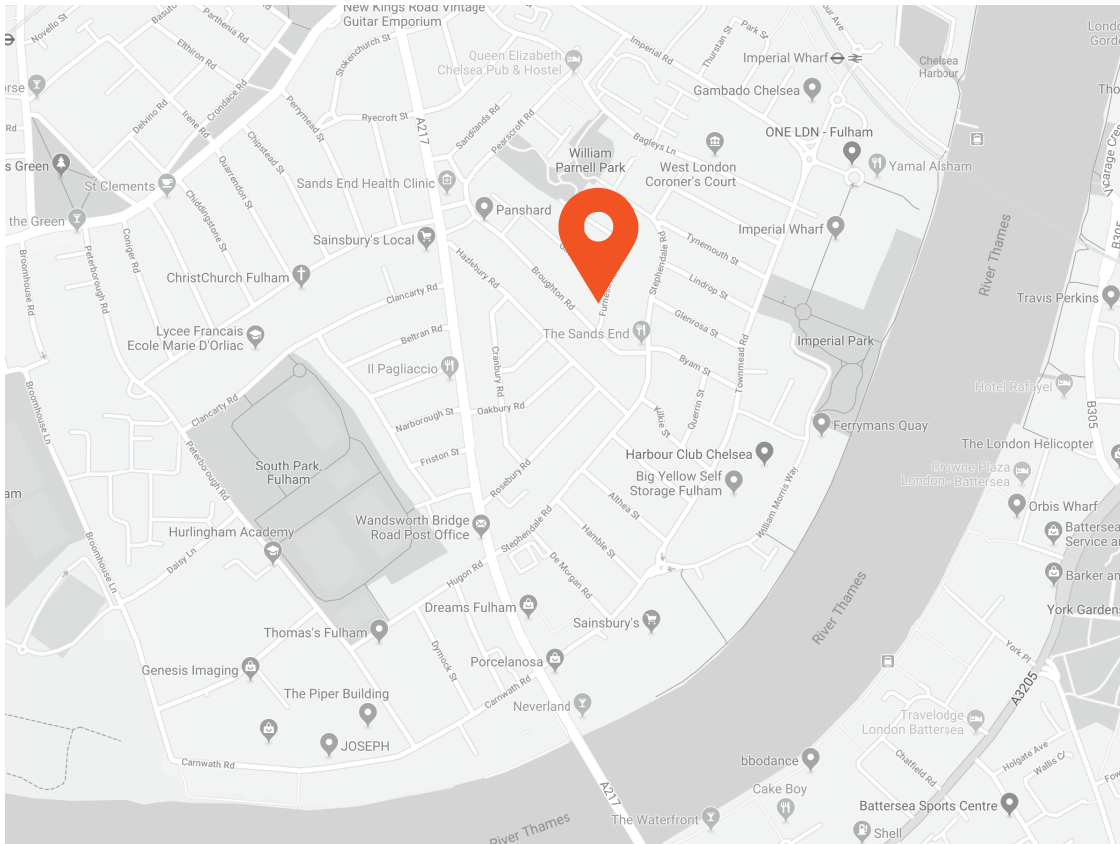
First Floor
830 sq ft / 77.1 sq m



Second Floor
662 sq ft / 61.5 sq m



Ground Floor
1035 sq ft / 96.2 sq m



Transport Links

- Imperial Wharf (0.5 miles)
- Fulham Broadway (0.8 miles)
- Parsons Green (0.8 miles)

Aspire Fulham South
 +44 (0) 20 7736 6110
 fulham@aspire.co.uk

Aspire Fulham Central
 +44 (0) 20 7381 7381
 c.fulham@aspire.co.uk



This recyclable brochure has been produced in good faith to give a general guide. We have not undertaken a structural survey, nor have we tested the services or appliances. All measurements are approximate and the lease details where applicable must be confirmed by the solicitor. Brochure prepared by Colourbrush.

aspire.co.uk

