



Set on the quiet and popular Broughton Road, this gorgeous one bed is a superb find. Benefitting from it's own entrance direct to the street, it maximises the space with a 24'3 ft long reception leading on to the double bedroom and bathroom.

Everything has been well kept and regularly redecorated making the maisonette a beautiful pied-a-terre - a perfect first time buy or rental purchase.

Wandsworth Bridge Road is a short walk and offers a diverse range of bars, restaurants and shops. There are good transport links with Fulham Broadway and Parsons Green a short walk away and easy access to the City from Imperial Wharf and Wandsworth Town.



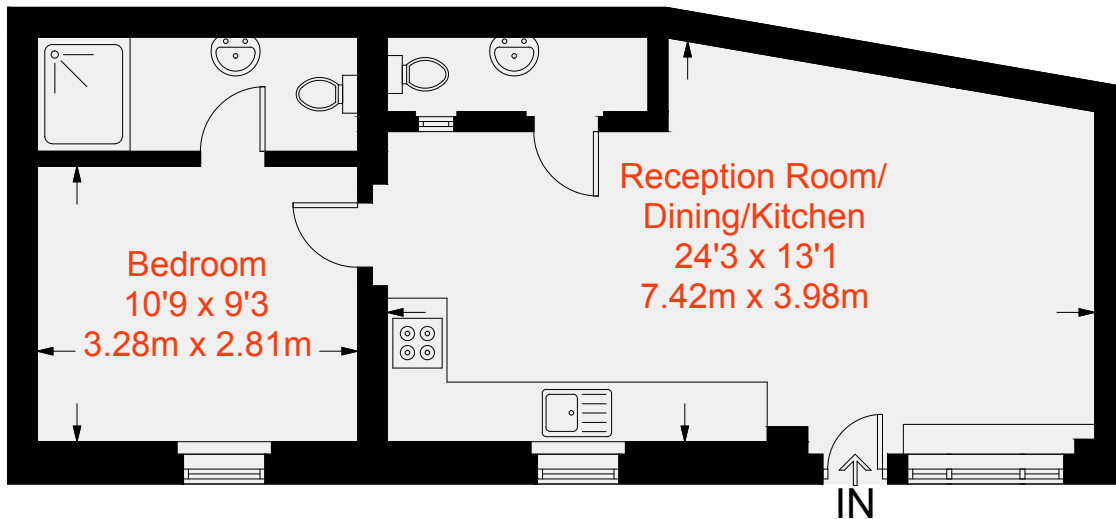




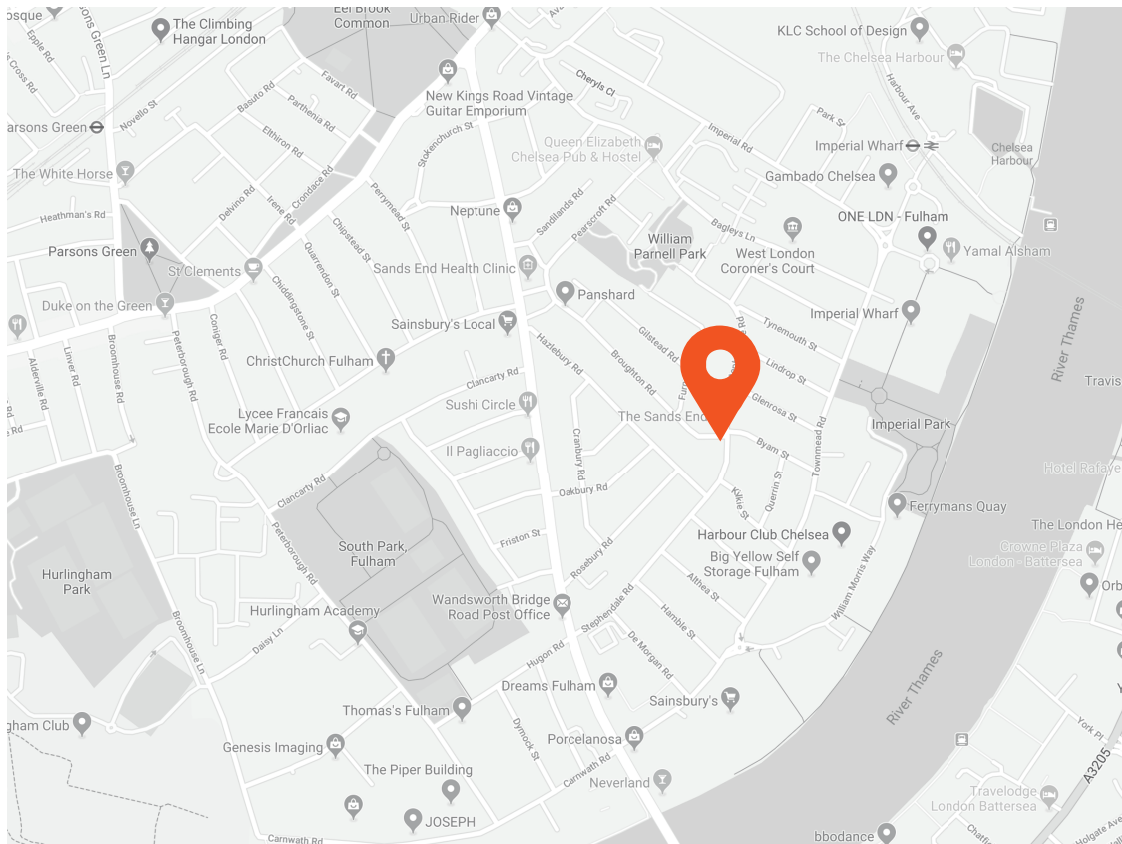




Approximate Gross Internal Area = 480 sq ft / 44.6 sq m



Ground Floor



Transport Links

- Imperial Wharf (0.4 miles)
- Fulham Broadway (0.8 miles)
- Wandsworth Town (0.9 miles)

Aspire Fulham South

+44 (0) 20 7736 6110
fulham@aspire.co.uk

Aspire Fulham Central

+44 (0) 20 7381 7381
c.fulham@aspire.co.uk

Battersea ● Fulham South ● Fulham Central ● Balham ● Clapham South ● Clapham High Street ● Furzedown

Energy Efficiency Rating

	Current	Potential
Very energy efficient - lower running costs		
(92-100) A		
(81-91) B		
(69-80) C	71	71
(55-68) D		
(39-54) E		
(21-38) F		
(1-20) G		
Not energy efficient - higher running costs		
England, Scotland & Wales	EU Directive 2002/91/EC	

Environmental Impact (CO₂) Rating

	Current	Potential
Very environmentally friendly - lower CO ₂ emissions		
(92-100) A		
(81-91) B		
(69-80) C	70	70
(55-68) D		
(39-54) E		
(21-38) F		
(1-20) G		
Not environmentally friendly - higher CO ₂ emissions		
England, Scotland & Wales	EU Directive 2002/91/EC	



This recyclable brochure has been produced in good faith to give a general guide. We have not undertaken a structural survey, nor have we tested the services or appliances. All measurements are approximate and the lease details where applicable must be confirmed by the solicitor. Brochure prepared by Colourbrush.

aspire.co.uk

