



CHAIN FREE: This two bedroom two bathroom maisonette is a rare find in Fulham. This property benefits from a lovely roof terrace, unobstructed by the opaque glass surround the council insists on these days. Not only that but the total square footage measures in at 978 sq ft with a location close to the Parsons Green end of Wandsworth Bridge Road, at an affordable price.

The property has a very large top floor bedroom with en-suite. On the half landing is the large communal bathroom which is also the access to the well sized terrace.

The first floor is made up on a high ceilinged open plan kitchen reception. Built carefully this has plenty of room for dining in the kitchen, while having the large front room exclusively for living.

The property has a large quiet double bedroom to the rear and it benefits from its own street level front door entrance.

A short walk to Parsons Green tube station which is conveniently located only 0.6 miles away, the flat is close to the popular Joes Brasserie, South Park, Sainsburys and many more local bars or restaurants. An ideal flat for first time buyers. Sold with no onward chain.





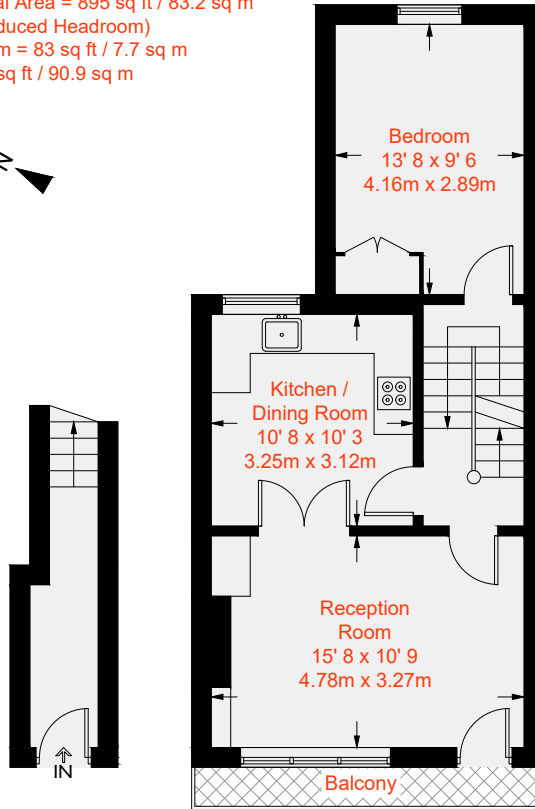




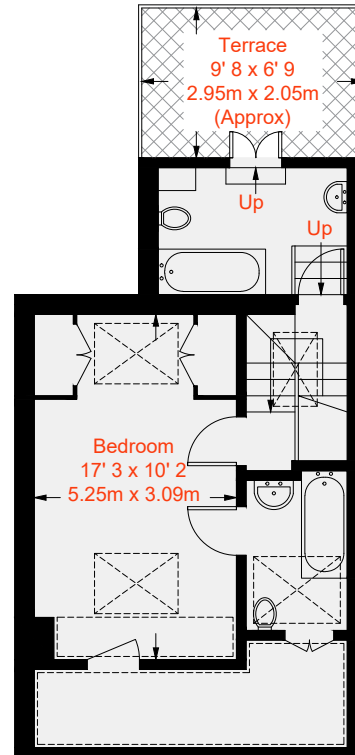


 = Reduced headroom below 1.5m / 5'0

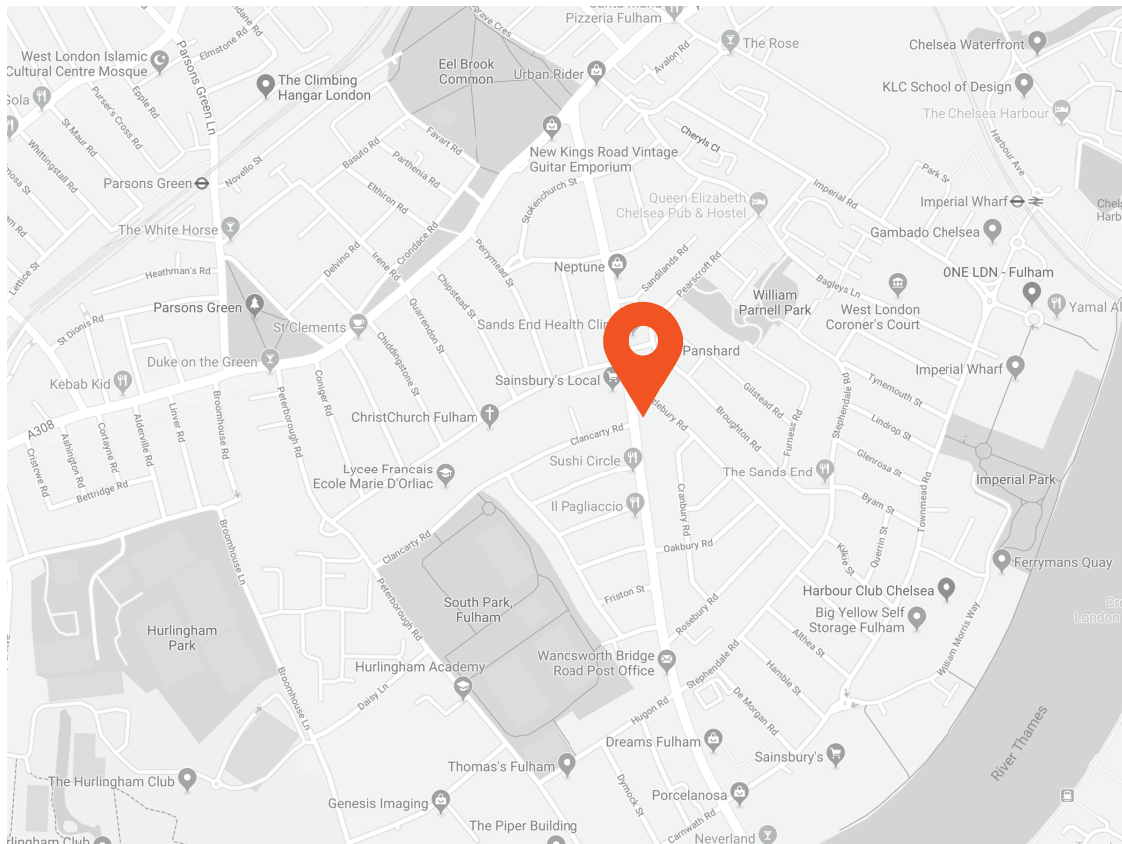
Approximate Gross Internal Area = 895 sq ft / 83.2 sq m
(Excluding Reduced Headroom)
Reduced Headroom = 83 sq ft / 7.7 sq m
Total = 978 sq ft / 90.9 sq m



Ground Floor 52 sq ft / 4.8 sq m
First Floor 499 sq ft / 46.4 sq m



Second Floor
427 sq ft / 39.7 sq m
(Including Reduced Headroom)



Transport Links

- Parsons Green (0.6 miles)
- Imperial Wharf (0.6 miles)
- Fulham Broadway (0.7 miles)

Aspire Fulham South

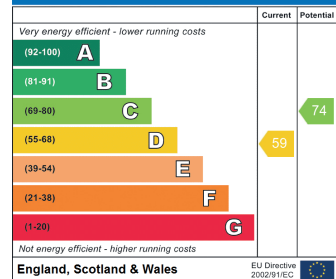
+44 (0) 20 7736 6110
fulham@aspire.co.uk

Aspire Fulham Central

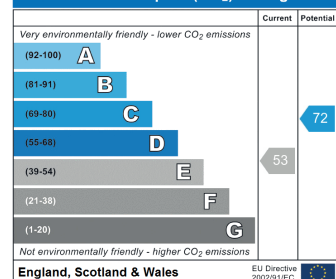
+44 (0) 20 7381 7381
c.fulham@aspire.co.uk

Battersea ● Fulham South ● Fulham Central ● Balham ● Clapham South ● Clapham High Street ● Furzedown

Energy Efficiency Rating



Environmental Impact (CO₂) Rating



This recyclable brochure has been produced in good faith to give a general guide. We have not undertaken a structural survey, nor have we tested the services or appliances. All measurements are approximate and the lease details where applicable must be confirmed by the solicitor. Brochure prepared by Colourbrush.

aspire.co.uk

