



This three bedroom first floor flat is located on the popular 'Bury Triangle'. The accommodation is over two levels and benefits from the array of amenities available on Wandsworth Bridge Road.

The ground floor is home to the kitchen which has room for a dining table and a door which gives access to the shared garden. Upstairs to the first floor is the reception room to the front of the property which has sash windows, high ceilings and a feature fire place. There are three good sized bedrooms, each with sash windows that fill the rooms with natural light. There is a full family bathroom with an overhead velux window.

Cranbury Road is a pretty tree-lined street in South Fulham, it is perfectly situated, close to local prestigious schools such as Thomas's, the L'Ecole des Petits and the Lycée, as well as the green spaces of South Park and Hurlingham Park. Transport links include, Imperial Wharf overground and Parsons Green and Fulham Broadway underground stations, all of which are within walking distance. The popular Sands End gastro pub is only around the corner as is the Wandsworth Bridge Road with its array of cafes, bars, shops and restaurants.



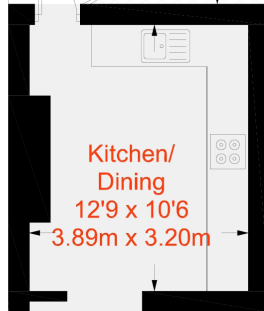
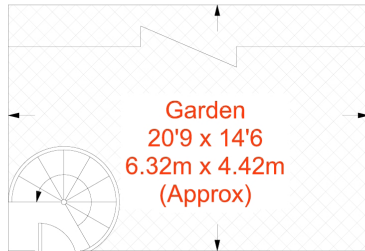




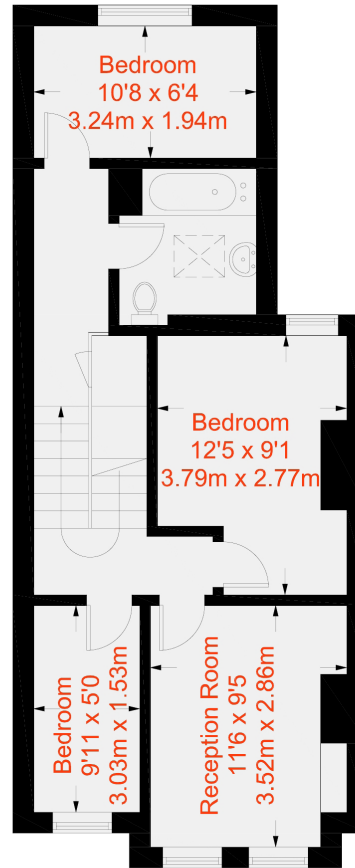




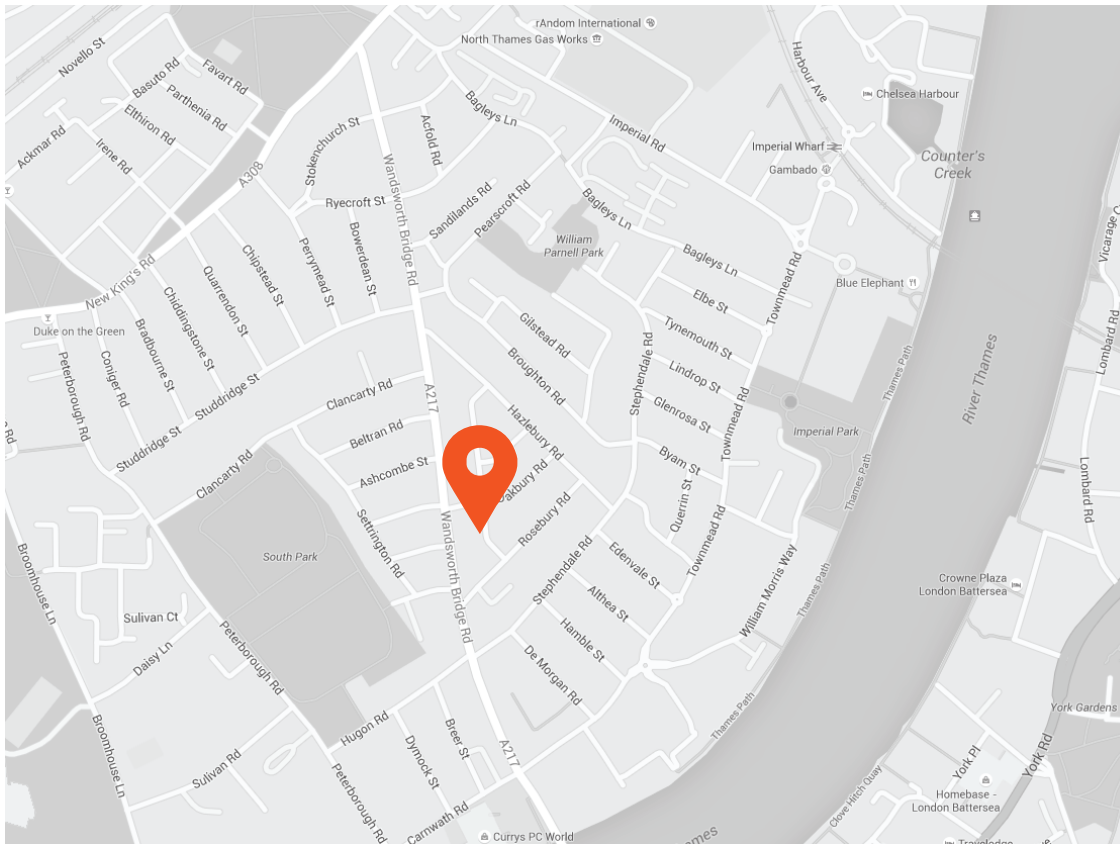
Approximate Gross Internal Area = 710 sq ft / 66 sq m



Ground Floor
195 sq ft / 18.1 sq m



First Floor
515 sq ft / 47.8 sq m



Transport Links

- Imperial Wharf (0.7 miles)
- Parsons Green (0.8 miles)
- Fulham Broadway (0.9 miles)

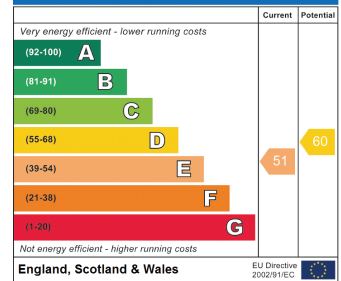
Aspire Fulham South

+44 (0) 20 7736 6110
fulham@aspire.co.uk

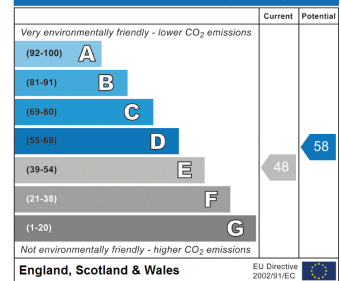
Aspire Fulham Central

+44 (0) 20 7381 7381
c.fulham@aspire.co.uk

Energy Efficiency Rating



Environmental Impact (CO₂) Rating



This recyclable brochure has been produced in good faith to give a general guide. We have not undertaken a structural survey, nor have we tested the services or appliances. All measurements are approximate and the lease details where applicable must be confirmed by the solicitor. Brochure prepared by Colourbrush.

aspire.co.uk

