



Only four years old since conversion, this delightful studio apartment is surprisingly spacious at 507 square foot of space including storage. The property is an ideal rental investment, pied-a-terre or short let apartment providing separated bed space, a beautiful shower room and spacious open plan reception complete with separate living and dining space.

The kitchen is fitted with modern appliances and the property still retains most of its original chic design.

A short walk to Parsons Green tube station which is conveniently located only 0.6 miles away, the flat is close to the popular Joe's Brasserie, Sainsbury's and many more local bars or restaurants. An ideal first time purchase or pied-a-terre close to the Green.



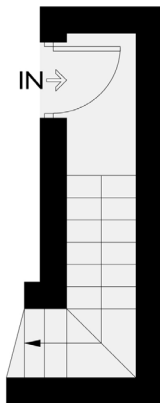








Approximate Gross Internal Area = 401 sq ft / 37.2 sq m
 (Excluding Reduced Headroom / Eaves)
 Reduced Headroom / Eaves = 106 sq ft / 9.9 sq m
 Total = 507 sq ft / 47.1 sq m
 (Including Reduced Headroom / Eaves)

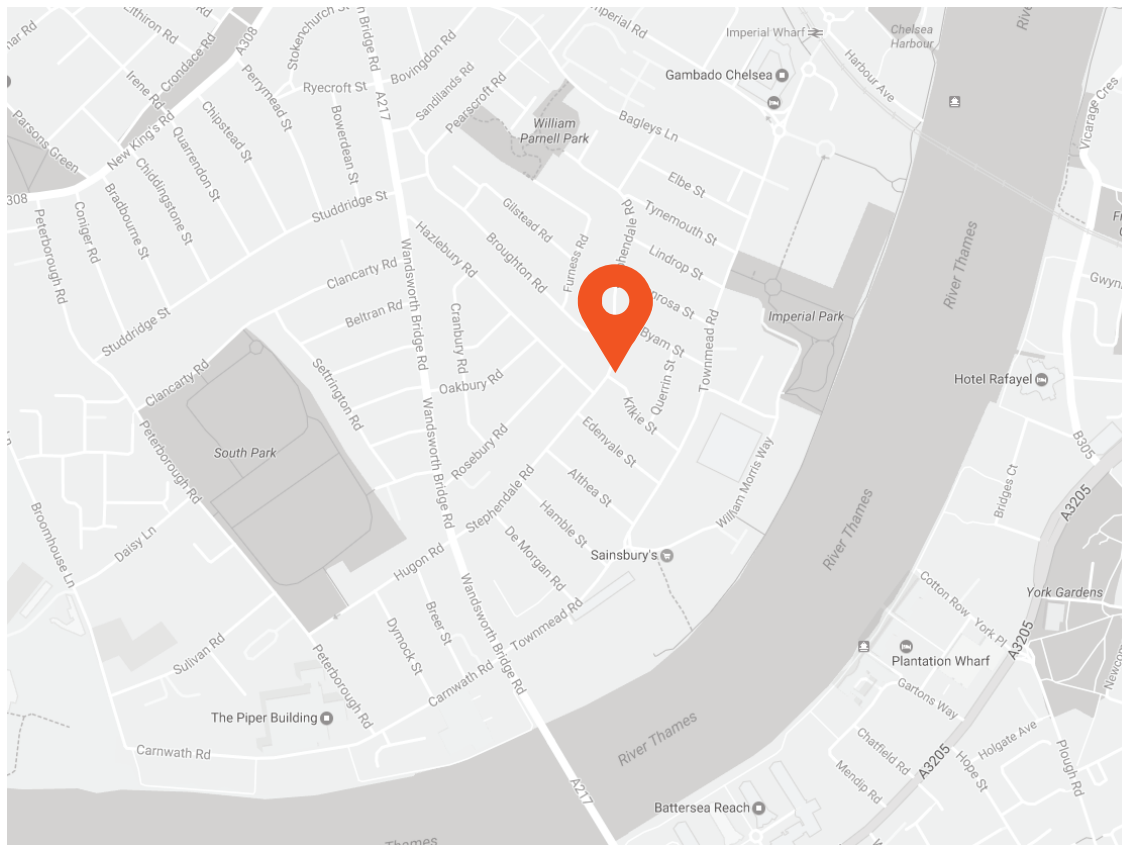


Second Floor
 40 sq ft / 3.7 sq m

 = Reduced headroom below 1.5m / 5'0"



Third Floor
 467 sq ft / 43.4 sq m
 (Including Reduced Headroom / Eaves)



Transport Links

- Imperial Wharf (0.4 miles)
- Wandsworth Town (0.9 miles)
- Parsons Green (0.9 miles)

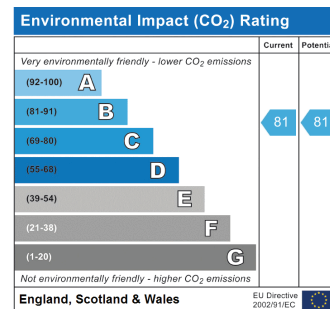
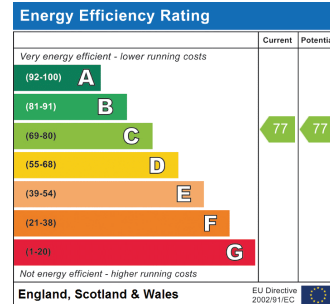
Aspire Fulham South

+44 (0) 20 7736 6110
fulham@aspire.co.uk

Aspire Fulham Central

+44 (0) 20 7381 7381
c.fulham@aspire.co.uk

Battersea ● Fulham South ● Fulham Central ● Balham ● Clapham South ● Clapham High Street ● Furzedown



This recyclable brochure has been produced in good faith to give a general guide. We have not undertaken a structural survey, nor have we tested the services or appliances. All measurements are approximate and the lease details where applicable must be confirmed by the solicitor. Brochure prepared by Colourbrush.

aspire.co.uk

