



Set in one of the large period buildings that Fulham is so famous for, this two bedroom ground floor flat is spacious in every aspect. The ceiling heights are a foot or two higher than the norm in the area which gives a sense of grandeur and space throughout the flat.

The property is well presented and offers a large living room to the front, with an exceptionally large double bedroom behind. The second double bedroom is nestled behind with the generous kitchen diner to the rear leading out to the patio garden. A spacious bathroom services the apartment to the rear of the property.

With plenty of room for storage, the property is ideal for those who prefer larger living while benefitting from a garden rather than a terrace - with South Park round the corner and its own front door it is ideal for those who have dogs as the opportunities to stretch your legs are boundless.

Perfectly situated for the popular amenities around Parsons Green and South Fulham, including the cafes and restaurants on Wandsworth Bridge Road itself, the Harbour Club, the Hurlingham Club and South Park. Transport links are also easily accessible; Imperial Wharf, Parsons Green, Fulham Broadway and Wandsworth Town stations are all within walking distance and the bus routes close by lead towards Clapham Junction, Chelsea, Shepherds Bush, and High Street Kensington.

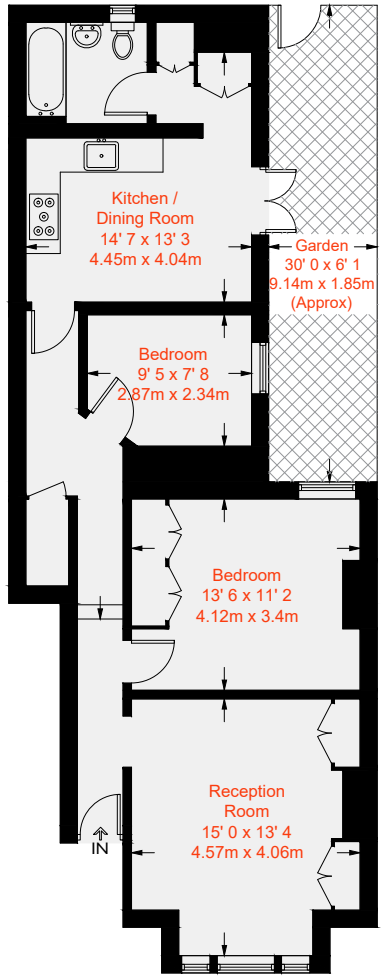








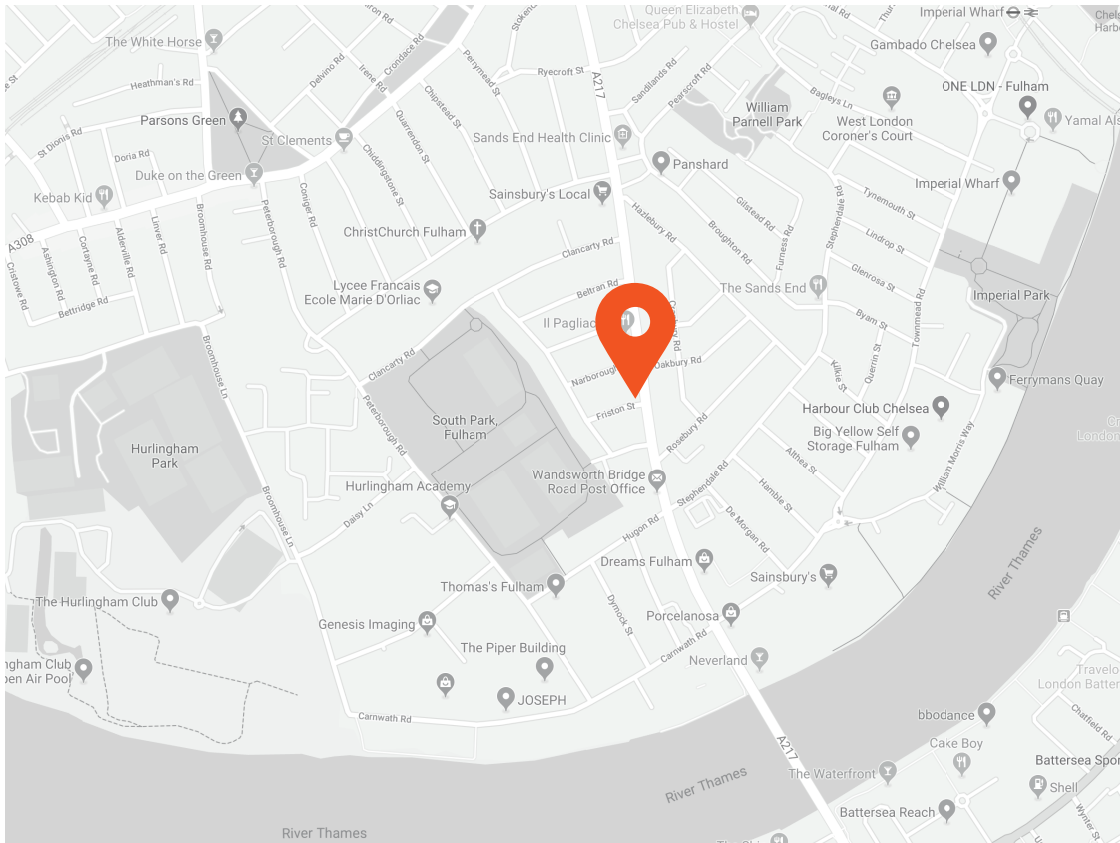




Approximate Gross Internal Area = 786 sq ft / 73 sq m



Ground Floor

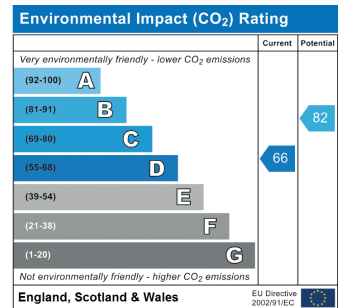
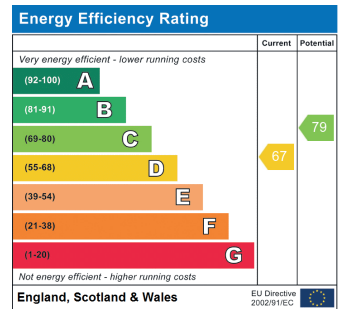


Transport Links

- Wandsworth Town (0.8 miles)
- Parsons Green (0.8 miles)
- Imperial Wharf (0.9 miles)

Aspire Fulham South
 +44 (0) 20 7736 6110
 fulham@aspire.co.uk

Aspire Fulham Central
 +44 (0) 20 7381 7381
 c.fulham@aspire.co.uk



This recyclable brochure has been produced in good faith to give a general guide. We have not undertaken a structural survey, nor have we tested the services or appliances. All measurements are approximate and the lease details where applicable must be confirmed by the solicitor. Brochure prepared by Colourbrush.

aspire.co.uk

