



Beautifully designed throughout, this 1,263 sq ft apartment is a top floor duplex like no others in Fulham. The original construction of the building means that you have high ceilings on every floor, while the flat was constructed to exacting specifications as a high end pied-a-terre in London, so all works and fittings are of the highest standards.

Living accommodation comes in the form of three double bedrooms, while the master suite benefits from a large walk-in wardrobe. The communal bathroom is large and spacious.

The crowning glory of the apartment is the entire second floor, dedicated to a huge kitchen with large dining space leading out to the reception. Over 37 ft in length it is beyond luxurious and an incredible find with high ceilings and period features.

Located on Filmer Road, the property is located just around the corner from the popular Munster Village and it is within walking distance to Fulham Broadway and Parsons Green for the District underground line.







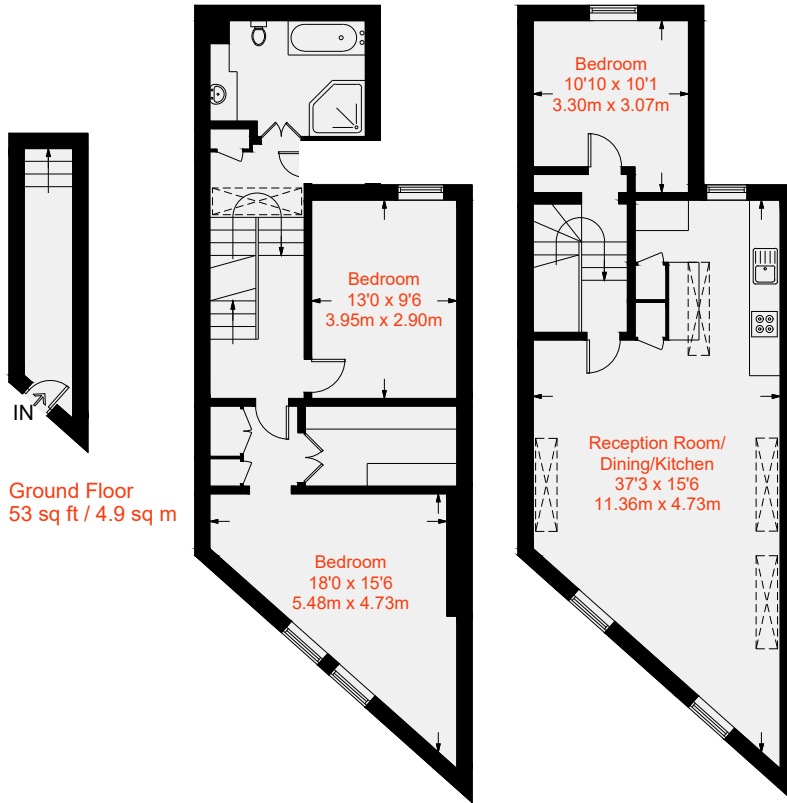








Approximate Gross Internal Area = 1263 sq ft / 117.3 sq m

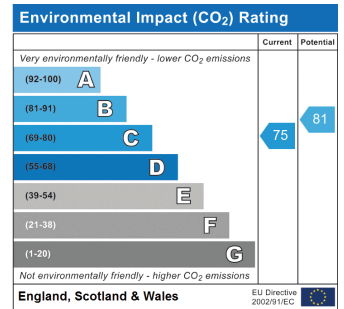
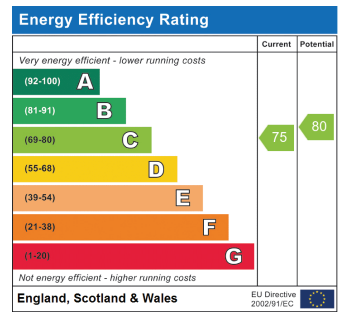
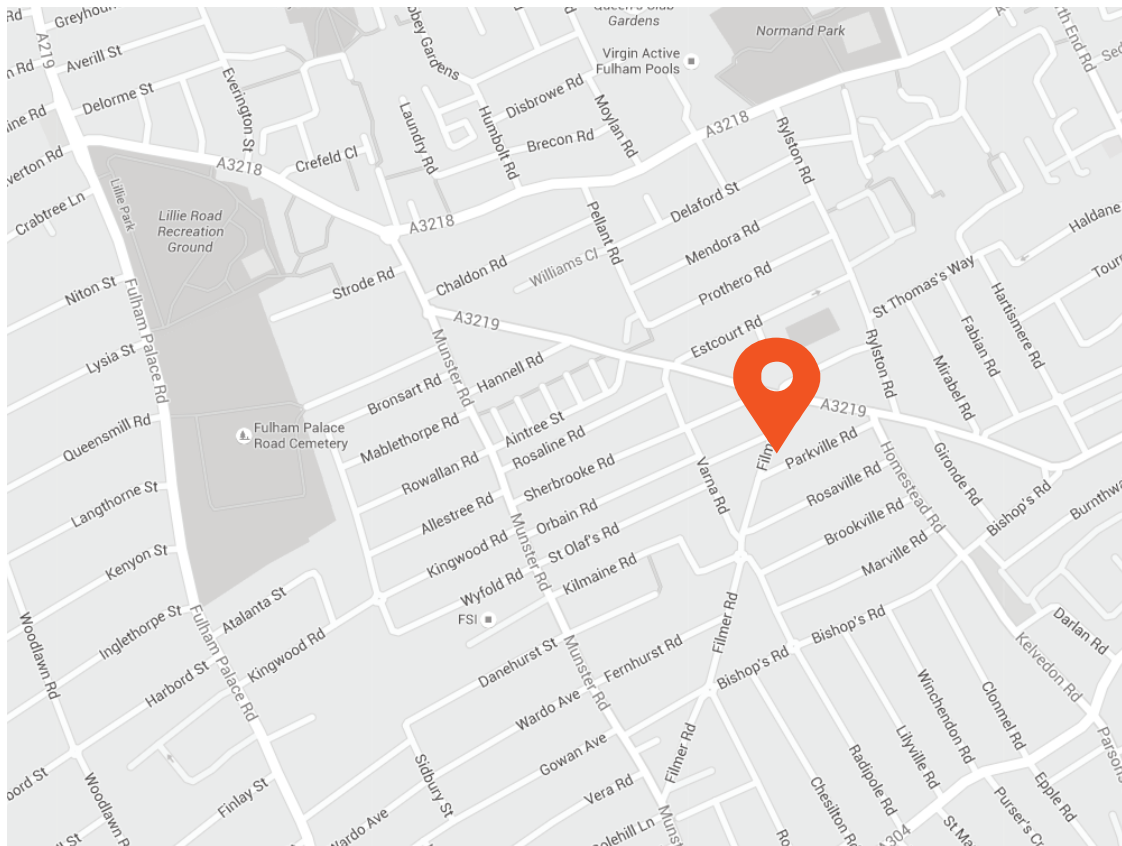


Ground Floor  
53 sq ft / 4.9 sq m

First Floor  
605 sq ft / 56.2 sq m

Second Floor  
605 sq ft / 56.2 sq m





This recyclable brochure has been produced in good faith to give a general guide. We have not undertaken a structural survey, nor have we tested the services or appliances. All measurements are approximate and the lease details where applicable must be confirmed by the solicitor. Brochure prepared by Colourbrush.

#### Transport Links

- Parsons Green (0.6 miles)
- Fulham Broadway (0.7 miles)
- West Brompton (0.9 miles)

#### Aspire Fulham South

+44 (0) 20 7736 6110  
fulham@aspire.co.uk

#### Aspire Fulham Central

+44 (0) 20 7381 7381  
c.fulham@aspire.co.uk

aspire.co.uk

