



An especially large and stunningly finished two bedroom set on the Wandsworth Bridge Road. Only minutes from the leafy spaces of South Park and Eel Brook Common, it has recently been refurbished to give comfortable modern living in this sumptuous property.

Boasting a large reception room at the rear of the property with fantastic features including an exposed brick wall and bi-fold doors that open up onto a south west-facing, beautifully maintained garden.

There are two double bedrooms, one with a walk-in wardrobe and an ensuite shower room and a further family bathroom further down the corridor.

Situated a short walk from both Parsons Green and Fulham Broadway underground stations and Imperial Wharf and Wandsworth Town overground stations, this property has excellent transport links to the city and the rest of London. Wandsworth Bridge Road offers a multitude of amenities including bars, shops and restaurants.







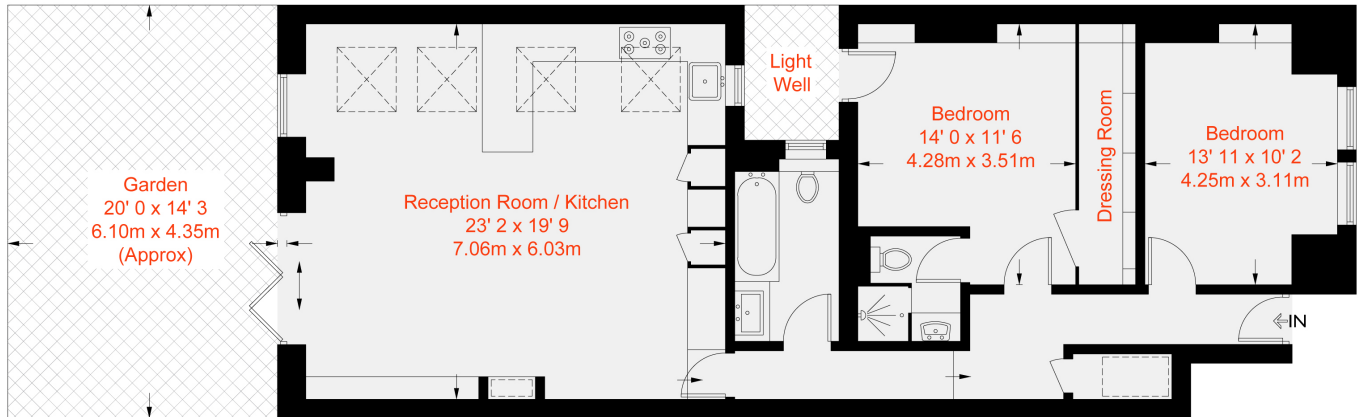




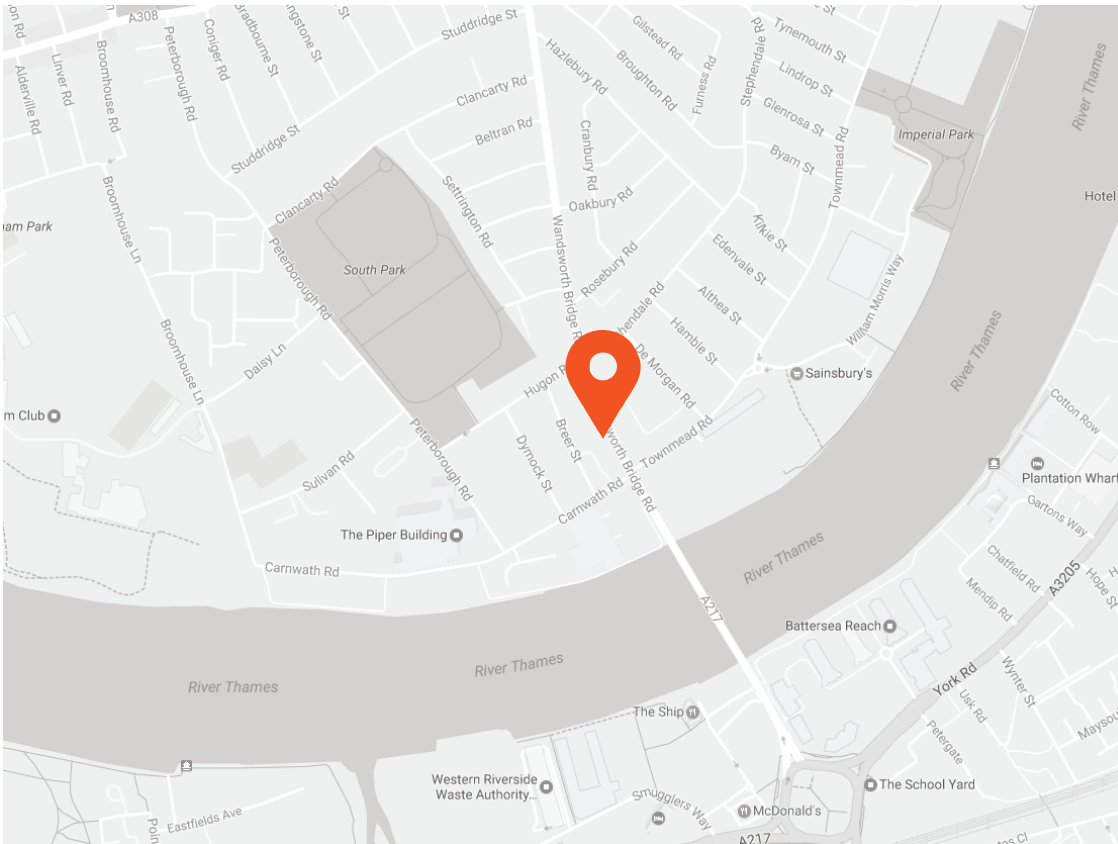
Approximate Gross Internal Area = 998 sq ft / 92.7 sq m  
(Excluding Reduced Headroom / Light Well)  
Reduced Headroom = 10 sq ft / 0.9 sq m  
Total = 1008 sq ft / 93.6 sq m  
(Including Reduced Headroom)



 = Reduced headroom below 1.5m / 5'0



Ground Floor



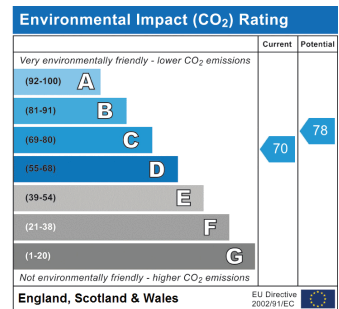
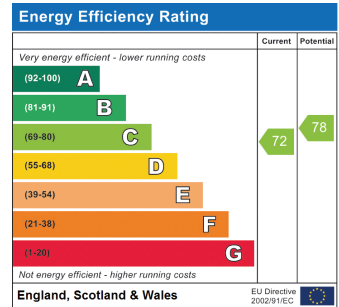
### Transport Links

- Wandsworth Town (0.6 miles)
- Imperial Wharf (0.7 miles)
- Parsons Green (1.0 miles)

**Aspire Fulham South**  
 +44 (0) 20 7736 6110  
 fulham@aspire.co.uk

**Aspire Fulham Central**  
 +44 (0) 20 7381 7381  
 c.fulham@aspire.co.uk

Battersea ● Fulham South ● Fulham Central ● Balham ● Clapham South ● Clapham High Street ● Furzedown



This recyclable brochure has been produced in good faith to give a general guide. We have not undertaken a structural survey, nor have we tested the services or appliances. All measurements are approximate and the lease details where applicable must be confirmed by the solicitor. Brochure prepared by Colourbrush.

aspire.co.uk

