



A new development comprising of three immaculately finished flats on Stephendale Road in Sands End, South Fulham.

The first floor flat has two spacious double bedrooms that span the front of the property. Beside the bedrooms is a large bathroom and at the rear there is a modern fully fitted kitchen and living room. The living room has large double doors that open out to a flat roof. The ability to open the doors gives a great feeling of space and light. The flat has been finished immaculately throughout and is ready for someone to move straight into.

The property is positioned in the heart of Sands End, just moments from the extremely popular Sands End gastro pub. The location is conveniently located for the amenities of Wandsworth Bridge Road which plays host to an array of cafes, shops and restaurants. Fulham Broadway and Imperial Wharf are the closest underground and overground stations respectively and both are a short walk away. There are also some prestigious local schools nearby including Thomas's Fulham, Marie D'Orliac and L'Ecole De Petit.



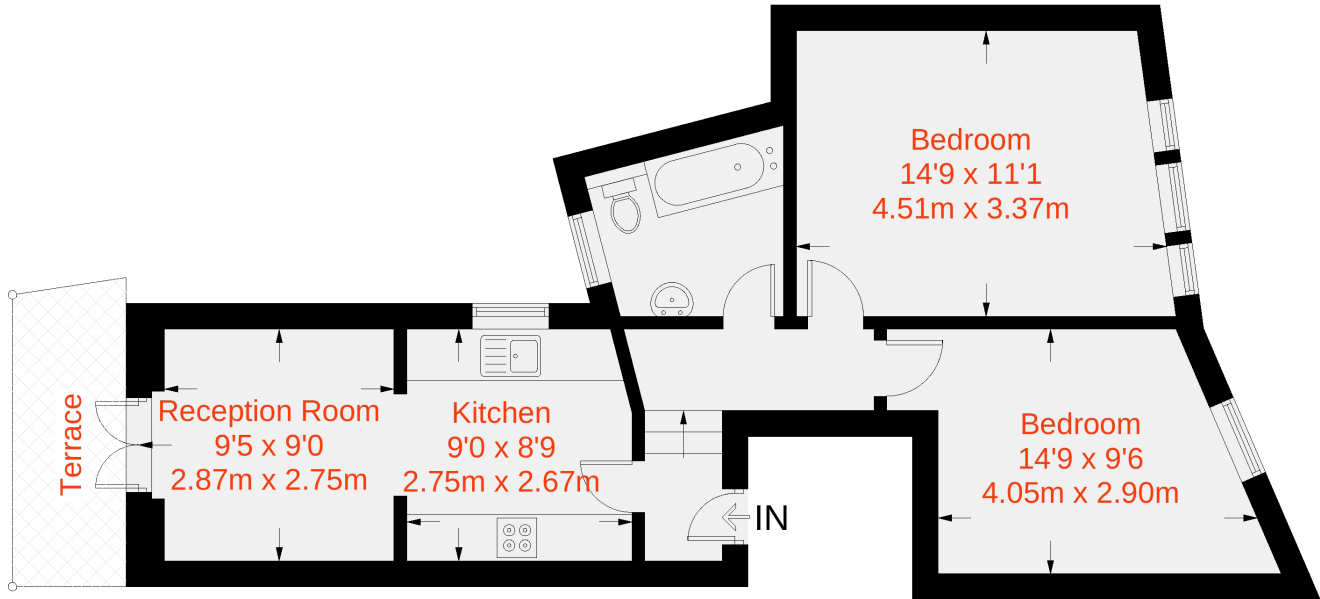




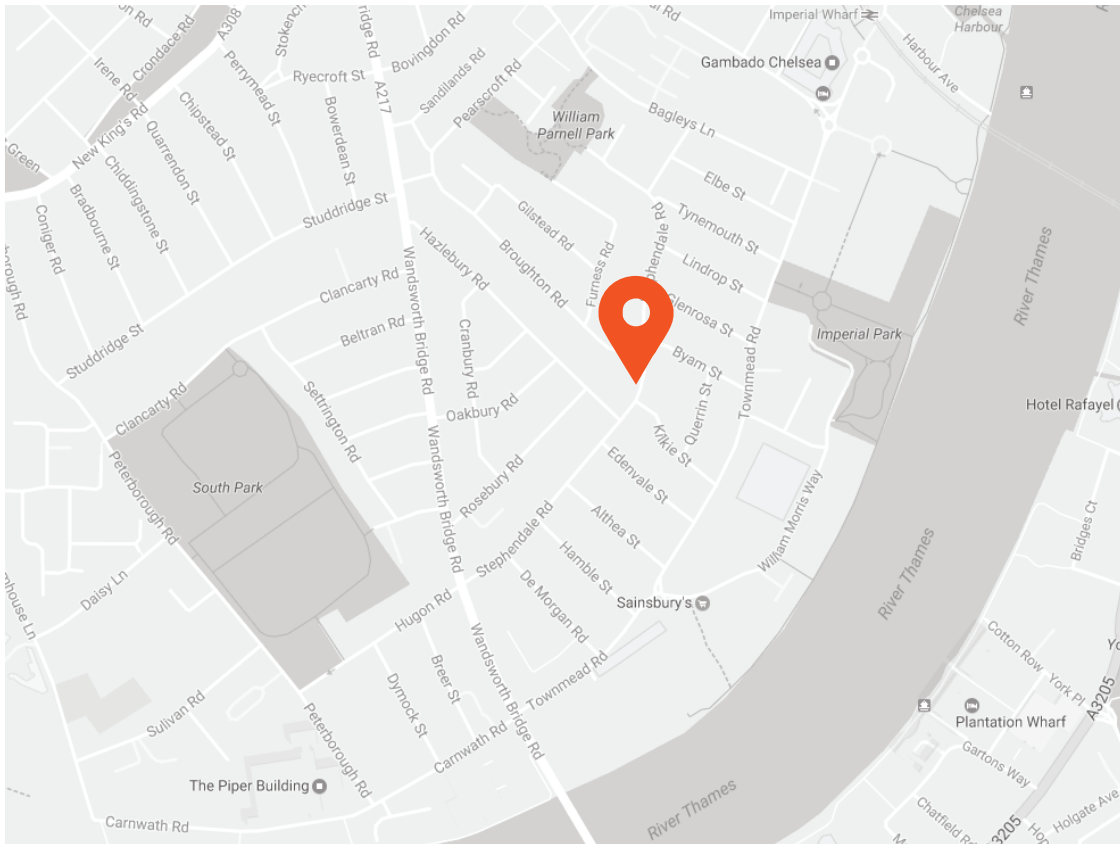




Approximate Gross Internal Area = 552 sq ft / 51.3 sq m



First Floor



Transport Links

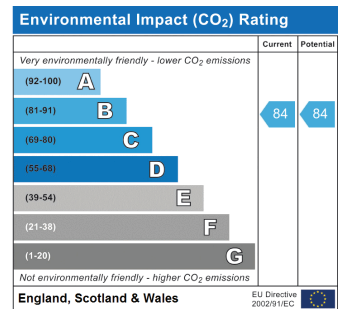
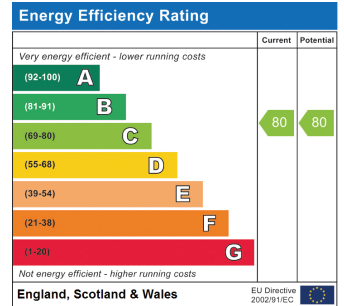
- Imperial Wharf (0.5 miles)
- Fulham Broadway (0.9 miles)
- Parsons Green (0.9 miles)

Aspire Fulham South

+44 (0) 20 7736 6110
fulham@aspire.co.uk

Aspire Fulham Central

+44 (0) 20 7381 7381
c.fulham@aspire.co.uk



This recyclable brochure has been produced in good faith to give a general guide. We have not undertaken a structural survey, nor have we tested the services or appliances. All measurements are approximate and the lease details where applicable must be confirmed by the solicitor. Brochure prepared by Colourbrush.

aspire.co.uk

