



This stylish two bedroom flat with private roof terrace is situated on the ever popular New Kings Road and benefits from the array of bars, restaurants and cafes around Parsons Green as well as the tube station being only a short walk away.

The reception room has wood flooring throughout and large Velux windows that fill the room with natural light, making it an inviting living space. There are stairs up to the first bedroom which has a window to the rear. The kitchen has been decorated with sleek grey fronts, has a Velux window and integrated appliances. There is a fully tiled, full bathroom with chrome fittings. The master bedroom is to the rear of the property and has a large window and built in storage. This property also benefits from a decked terrace with far reaching views across Fulham, making it a wonderful space to entertain.

Parsons Green is a popular destination with its bars, restaurants and boutique shops. There is a Little Waitrose for grocery shopping and excellent transport links with the district line at Parsons Green station plus bus routes into Chelsea and the West End.



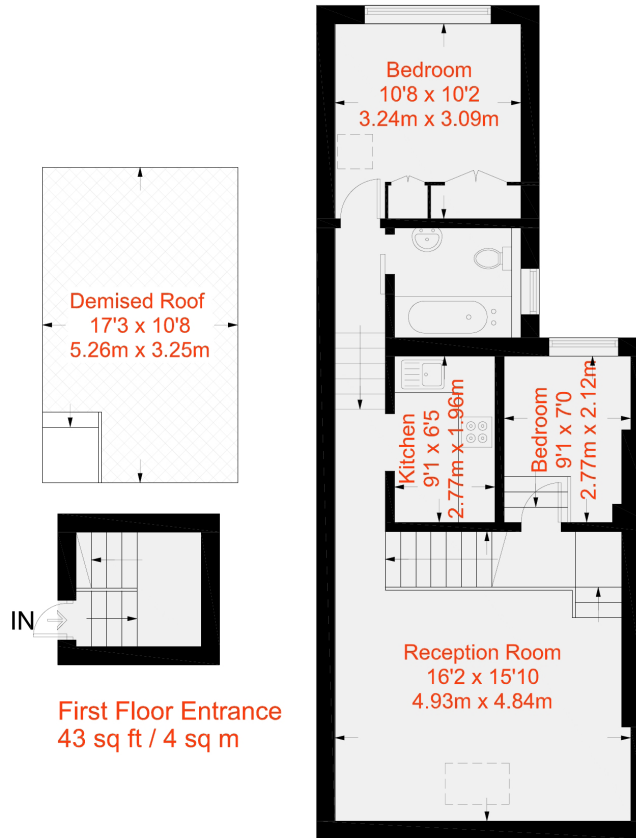




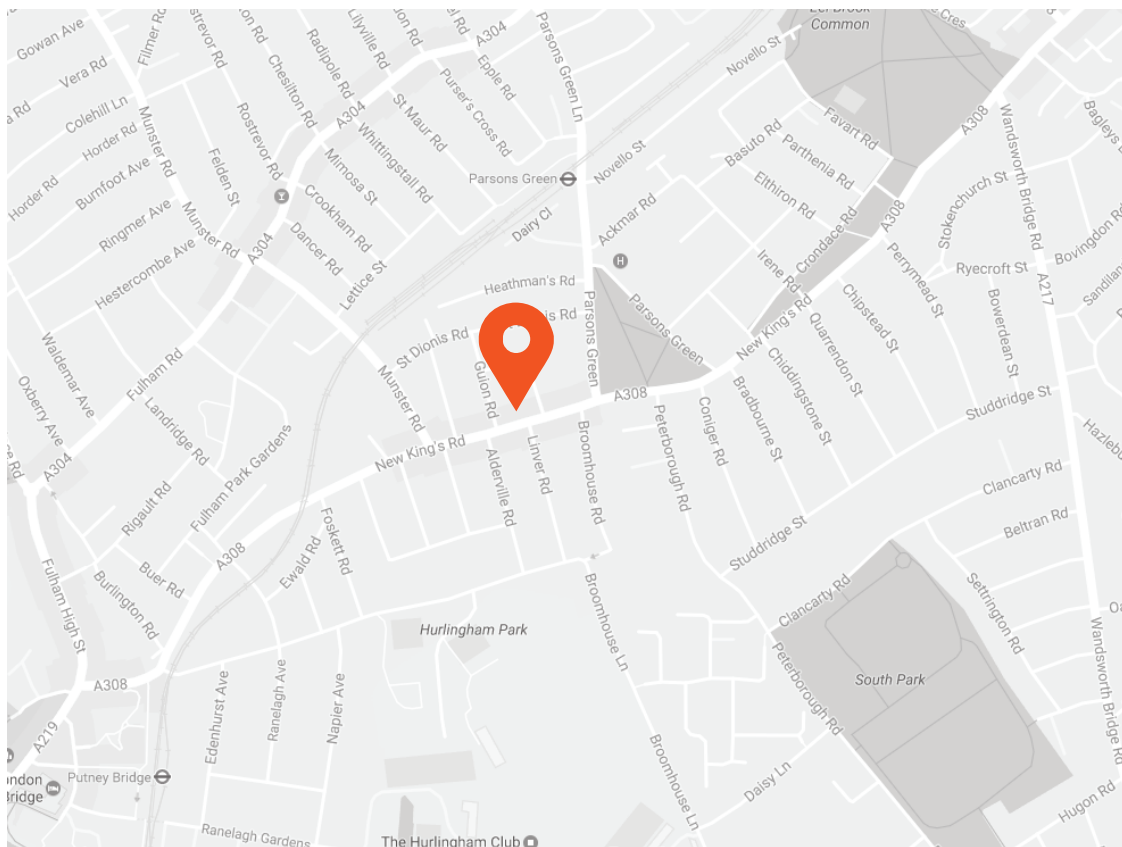




Approximate Gross Internal Area = 659 sq ft / 61.2 sq m



Second Floor
589 sq ft / 54.7 sq m



Transport Links

- Parsons Green (0.2 miles)
- Putney Bridge (0.6 miles)
- Fulham Broadway (0.9 miles)

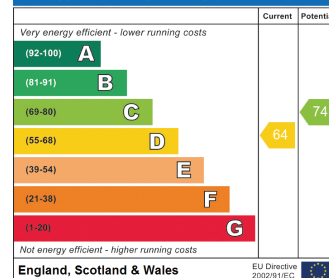
Aspire Fulham South

+44 (0) 20 7736 6110
fulham@aspire.co.uk

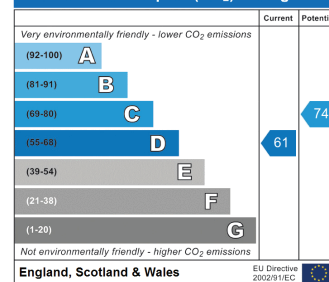
Aspire Fulham Central

+44 (0) 20 7381 7381
c.fulham@aspire.co.uk

Energy Efficiency Rating



Environmental Impact (CO₂) Rating



This recyclable brochure has been produced in good faith to give a general guide. We have not undertaken a structural survey, nor have we tested the services or appliances. All measurements are approximate and the lease details where applicable must be confirmed by the solicitor. Brochure prepared by Colourbrush.

aspire.co.uk

